

## Solid Plastic (HDPE) partitions are environmentally safe, mildew, rust, graffiti and impact resistant.

Solid Plastic partitions are water resistant, unaffected by steam or high humidity and have passed the NFPA 286 fire test criteria. For standard features see pages 18-19. **Options:** Stainless Steel Stirrup Brackets, Stainless Steel Door Hardware, Continuous Piano Hinges, Continuous Anodized Aluminum and Stainless Steel Brackets, Aluminum Door Hardware and No-Sight Privacy Strips. Our most popular colors are also available in 100% post-consumer recycled material.

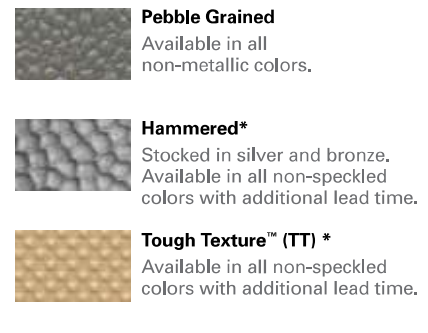


**Shipped In**  
**48**  
**HOURS**

### SOLID PLASTIC (HDPE) COLOR SELECTION:



### AVAILABLE FINISHES:



\*Compartments limits also apply to the non-stocked colors. Consult color card for more definitive color matching.