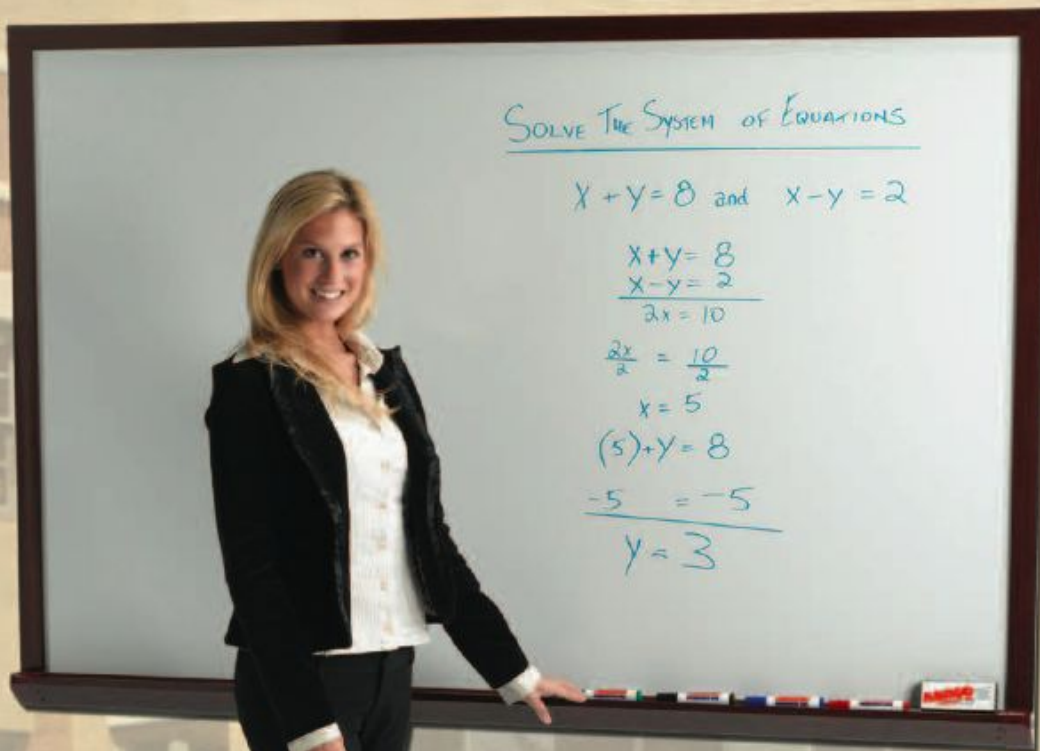
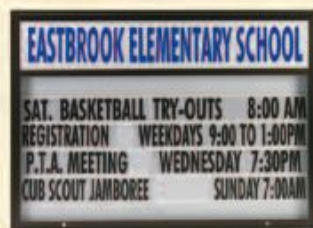
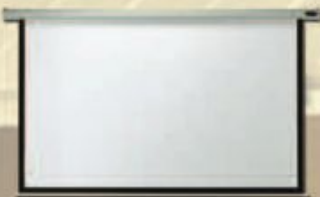


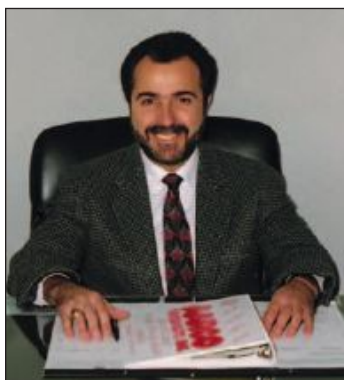
# AARCO PRODUCTS INC.™

Since 1975



- Visual Display Boards
- Enclosed Boards, Directories & Cases
- Outdoor Community Boards
- Indoor Signs, Menu Boards, Message Centers
- Cigarette Receptacles
- Crowd Control Products
- Magazine and Literature Displays
- Luggage and Bellman Carts





George M. DeMartino  
 President

**S**ince 1975 Aarco Products Inc. has manufactured a full range of **Visual Communication Products**. As a result of customer demand we have expanded our product line to include a full range of hospitality and crowd control products. As always our products are manufactured

according to the highest standard, yet maintaining competitive prices.

Whether you need a markerboard for your office or classroom, a menu board or display stand for your restaurant, or a luggage cart for your hotel lobby, Aarco Products will provide the best product at a fair and competitive price.

Additionally, if your needs require customization, our speciality department will assist you in designing the product that is right for you.

If you have already experienced our products and services, we thank you for your continued support.

If you have not, we welcome the challenge of making you a lifetime, satisfied customer.

At Aarco, we are committed to preserving our natural resources and protecting the environment. Building products that are safe and sustainable is our top priority. It all begins with responsible manufacturing which incorporates the use of materials that are rapidly renewable, low or non-emitting, recycled and recyclable.



This is not a new concept to us. For over 30 years we have been manufacturing products using materials such as aluminum and steel which are recyclable, cork which is rapidly renewable and a host of wood products that are made from recycled materials and are environmentally preferred.

Whether your needs are to conform with California ARB standards, achieving LEED points or you simply share our commitment to our planet, Aarco has the right products for you.

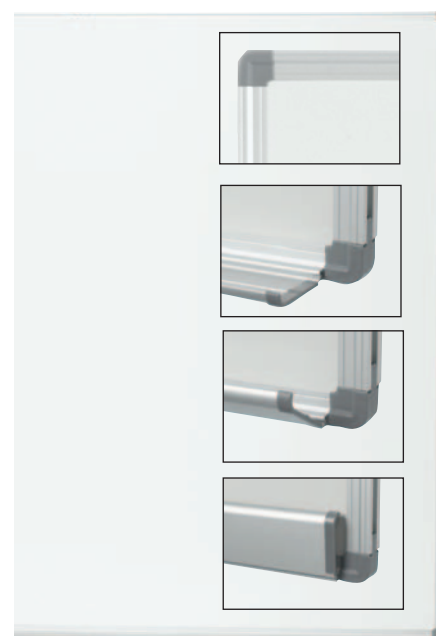
## New Products



Souvenir & Memorabilia  
 Display Case



Portable Whiteboard Tripod & Folding Easels



Euro Frame with Convenient folding tray

### Aarco Products, Inc.

21 Old Dock Road, Yaphank, NY 11980  
 In New York Tel: (631) 924-5461

**Tel:(800) 246-6038 Fax:(631) 924-5843**

See Us on the Web at [www.aarcoproducts.com](http://www.aarcoproducts.com) E-Mail:  
[inquire@aarcoproducts.com](mailto:inquire@aarcoproducts.com)

Proud Member of:







Long Island Manufacturing Facility



## Contents

<b>Visual Display Boards</b>	<b>4-25</b>
Economy Series Marker, Chalk and Bulletin Boards	
Combination Boards	
Personal Size Writing Boards	
Bulletin Boards	
Free Standing Boards	
Chalkboards	
Markerboards	
Specialty Markerboards	
Map and Display Rails	
Vertical and Horizontal Sliding Units	
Overboard Resurfacing Boards	
Unframed Boards and Sheet Goods	
Projection Screens	
Conference Cabinets	
<b>Enclosed Boards, Directories and Cases</b>	<b>26-37</b>
Oak Framed Enclosed Letterboards and Bulletin Boards	
Souvenir and Memorabilia Display Case	
Aluminum Framed Enclosed Letterboards and Bulletin Boards	
<b>Outdoor Community Boards</b>	<b>38-41</b>
Marquee Changeable Letter Sign	
Letters and Graphics	
<b>Indoor Signs, Menu Boards, Message Centers</b>	<b>42-49</b>
Changeable Signs	
Chalk and Marker Menu Boards	
A Frame Sidewalk Boards	
A Frame Table Top Boards	
POP Advertising Boards	
Custom Boards	
LED Signs	
Free Standing Displays	
Podiums	
Luggage and Tray Stands	
<b>Cigarette Receptacles</b>	<b>50</b>
<b>Luggage and Bellman Carts</b>	<b>51</b>
<b>Crowd Control Products</b>	<b>52-53</b>
<b>Magazine and Literature Displays</b>	<b>54-55</b>

## Maverick Collection

Economy Series Chalkboards, Bulletin Boards and Markerboards are light duty but built to last.

**Hardwood Frame** with factory attached mounting hangers.

Size H & W	Natural Cork	Composition Chalkboard*	Melamine Markerboard
12" x 18"	EB1218	EC1218	EW1218
18" x 24"	EB1824	EC1824	EW1824
24" x 36"	EB2436	EC2436	EW2436
36" x 48"	EB3648	EC3648	EW3648

\*When ordering chalkboards specify Black (B) or Green (G). Example: 18"x24" Wood Frame with Black Chalkboard EC1824B

**Aluminum Frame** with factory attached mounting hangers.  
Full length trays on markerboards and chalkboards.

Size H & W	Natural Corkboard	Composition Chalkboard*	Melamine Markerboard
18" x 24"	AB1824	AC1824	AW1824
24" x 36"	AB2436	AC2436	AW2436
36" x 48"	AB3648	AC3648	AW3648

\*When ordering chalkboards specify Black (B) or Green (G). Example: 18"x24" Aluminum Frame with Black Chalkboard AC1824B

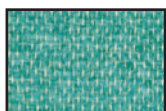
## The "Ritz" Deco Series

The Ritz Decorator Series combines plush panel fabric with a smooth, frameless radius design that complements any interior. Thick fiber board is fabric wrapped with an upholstered edge.

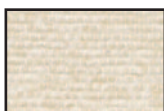
- Color Coordinate • Hangs Vertically or Horizontally

Size H&W	Model#	Size H&W	Model#
18" x 24"	RF1824( )	48" x 60"	RF4860( )
24" x 36"	RF2436( )	48" x 72"	RF4872( )
36" x 48"	RF3648( )		

Note: For ordering indicate color by adding letter shown next to color in parentheses. Black (BK), Mauve (M), Green(GN), Blue (BE), Beige (H) & Gray (G)  
Example: 18"x24" Honey Beige Ritz Fabric RF1824H



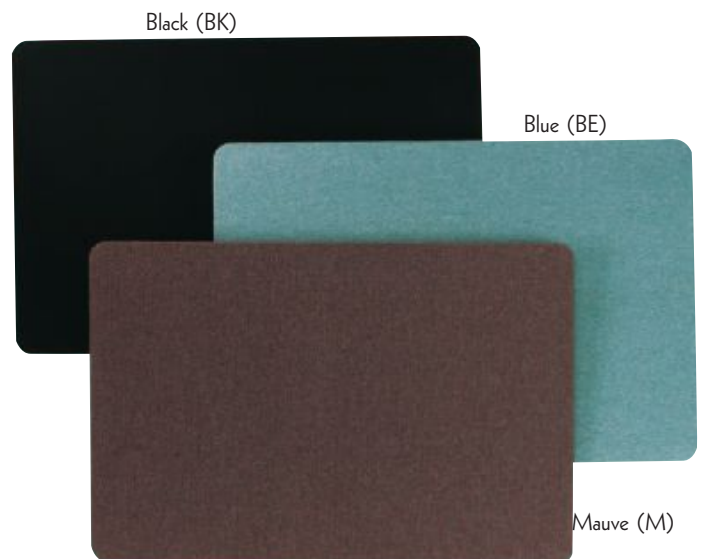
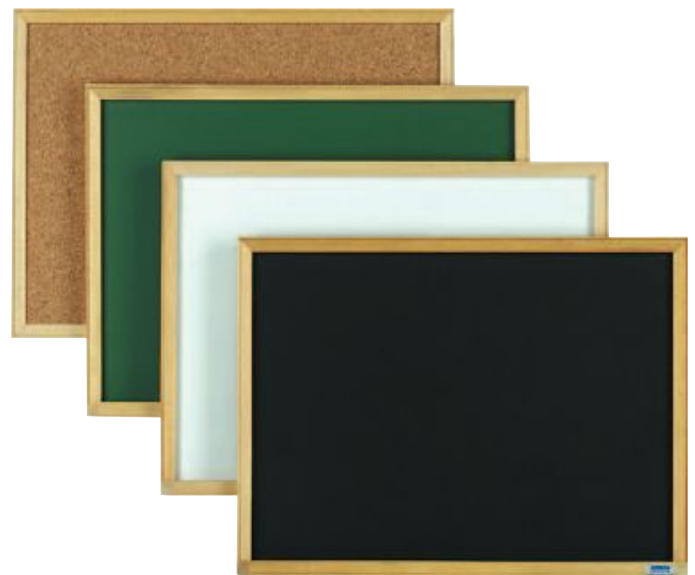
Green(GN)



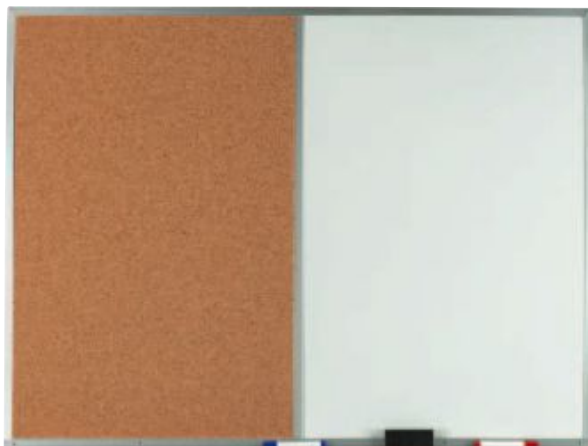
Beige (H)



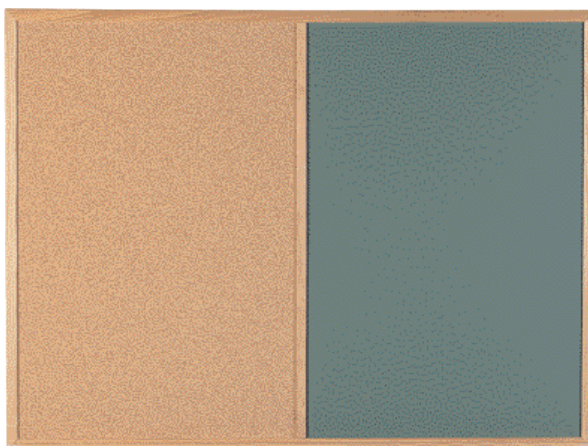
Gray (G)







Combination Corkboard/Melamine Markerboard  
Satin anodized aluminum or solid red oak frame



Combination Corkboard/Chalkboard  
(Available with Green or Black chalkboard)  
Satin anodized aluminum or solid red oak frame

## Combination Boards

Combine your favorite writing surface with an accompanying natural cork bulletin board inside one complete frame with a full length accessory tray. This convenient board is both economical and compact for limited wall space installations.

Choose either a melamine markerboard or a chalkboard\* writing surface. Both are available with a satin anodized aluminum or solid red oak frame with a high gloss lacquered finish.

### Combination Corkboard/Melamine Markerboard

Size H&W	Aluminum Frame Model#	Oak Frame Model#
24" x 36"	WDCO2436	WCO2436
36" x 48"	WDCO3648	WCO3648
48" x 72"	WDCO4872	WCO4872
48" x 96"	WDCO4896	WCO4896

### Combination Corkboard/Chalkboard (Black or Green)

Size H&W	Aluminum Frame Model#	Oak Frame Model#
24" x 36"	DCO2436 ( )	CO2436 ( )
36" x 48"	DCO3648 ( )	CO3648 ( )
48" x 72"	DCO4872 ( )	CO4872 ( )
48" x 96"	DCO4896 ( )	CO4896 ( )

\* Specify Green (G) or Black (B) chalkboard,  
Example: 24"x36" Aluminum Frame combination  
Corkboard and Black chalkboard DCO2436B

## Personal Size Writing Boards

Superior quality, light weight **lap boards** that are fun to use and make learning to write fun too. Also can be used for POP display. All edges and corners are rounded for safety. Choose plain surfaces or lined boards to improve penmanship skills.

Size H & W	Type	# In Set	Model#
9" x 12"	Solid Black	12 Pack	LB912B
12" x 18"	Solid Black	12 Pack	LB1218B
9" x 12"	Solid White	12 Pack	LB912W
12" x 18"	Solid White	12 Pack	LB1218W
9" x 12"	Solid Green	12 Pack	LB912G
12" x 18"	Solid Green	12 Pack	LB1218G
9" x 12"	Lined Black	12 Pack	LBL912B
12" x 18"	Lined Black	12 Pack	LBL1218B
9" x 12"	Lined White	12 Pack	LBL912W
12" x 18"	Lined White	12 Pack	LBL1218W
9" x 12"	Lined Green	12 Pack	LBL912G
12" x 18"	Lined Green	12 Pack	LBL1218G



Available in 2 sizes 9"x12" and 12"x18"  
All boards are 1/8" thick

## Burlap-Weave Vinyl Display Panels

Available with radius or square corner, these panels are designed for side by side or stand alone installation. Both styles complement most interior applications, are easy to install, and offer a large display area. Factory attached hangers are standard. Please specify style and color of vinyl when ordering.

### Square Burlap-Weave Vinyl Display Panels

Size H&W	Model#
18" x 24"	SV1824 ( )
24" x 36"	SV2436 ( )
36" x 48"	SV3648 ( )
48" x 48"	SV4848 ( )
48" x 72"	SV4872 ( )

Specify color when ordering. Example: 18"x24" square panel with denim surface SV1824553.

### Radius Burlap-Weave Vinyl Display Panels

Size H&W	Model#
18" x 24"	RV1824 ( )
24" x 36"	RV2436 ( )
36" x 48"	RV3648 ( )
48" x 48"	RV4848 ( )
48" x 72"	RV4872 ( )

Specify color when ordering. Example: 18"x24" radius panel with denim surface RV1824553.

## Designer Fabric Display Panels

Available with radius or square corner, these panels are designed for side by side or stand alone installation. Both styles complement most interior applications, are easy to install, and offer a large display area. Factory attached hangers are standard. Please specify style and color of fabric when ordering.

### Square Designer Fabric Display Panels

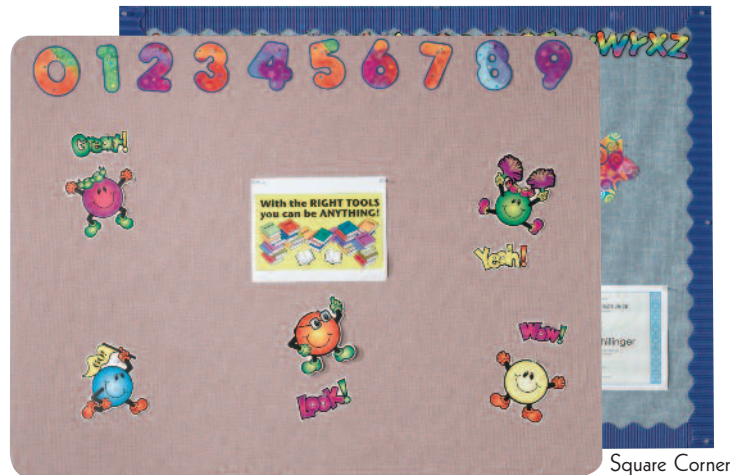
Size H&W	Model#
18" x 24"	SF1824 ( )
24" x 36"	SF2436 ( )
36" x 48"	SF3648 ( )
48" x 48"	SF4848 ( )
48" x 72"	SF4872 ( )

Specify color when ordering. Example: 18"x24" square fabric panel with Wedgewood fabric SF1824014.

### Radius Designer Fabric Display Panels

Size H&W	Model#
18" x 24"	RDF1824 ( )
24" x 36"	RDF2436 ( )
36" x 48"	RDF3648 ( )
48" x 48"	RDF4848 ( )
48" x 72"	RDF4872 ( )

Specify color when ordering. Example: 18" x 24" radius fabric panel with Wedgewood fabric RDF1824014..



\* Decorations not included Radius Corner  
When installed side by side square corners recommended

#### Tempo



692  
Platinum



640  
Willow

#### Highland



495  
Coffee  
Cream



384  
Stone



494  
Rose  
Mauve



470  
Dover

All Burlap Weave Vinyl is class B fire rated



\* Decorations not included Radius Edge  
When installed side by side square corners recommended

#### Designer Fabric Colors are:



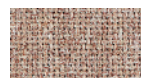
014  
Wedgewood



012  
Grey Mix



028  
Black



022  
Pumice



005  
Quartz



003  
Rose Quartz



## Standard Series Burlap-Weave Vinyl Bulletin Boards

Vinyl covered bulletin boards are attractive and durable and because of the wide variety of colors blend with almost any interior decor. This beautiful product is class B fire rated, water-proof, stain resistant and can easily be washed with mild detergents. Available in two different patterns: Highland and Tempo; refer to our complete color chart for more details. Available with either a solid red oak wood frame with a high gloss lacquer finish or an aluminum frame with a clear satin anodized finish. Both are equipped with factory attached mounting hangers.

Size H&W	Aluminum Frame Model#	Oak Frame Model#
24" x 36"	DV2436 ( )	OV2436 ( )
36" x 48"	DV3648 ( )	OV3648 ( )
48" x 48"	DV4848 ( )	OV4848 ( )
48" x 72"	DV4872 ( )	OV4872 ( )
48" x 96"	DV4896 ( )	OV4896 ( )
48" x 120"	DV48120 ( )	OV48120 ( )
48" x 144"	DV48144 ( )	OV48144 ( )

Specify color when ordering. Example: 24" x 36" aluminum frame with platinum surface DV2436692.

## Designer Fabric Bulletin Boards

Choose from 6 carefully selected colors to blend with any modern and contemporary interior. Our beautiful plain weave patterns are 100% Polyester 16 ounces per linear yard and are fire rated Class A, ASTM E-84. Complete color charts are available upon request. Available with either a solid red oak wood frame with a high gloss lacquer finish or an aluminum frame with a clear satin anodized finish. Both are equipped with factory attached mounting hangers.

Size H&W	Aluminum Frame Model#	Oak Frame Model#
24" x 36"	DF2436 ( )	OF2436 ( )
36" x 48"	DF3648 ( )	OF3648 ( )
48" x 48"	DF4848 ( )	OF4848 ( )
48" x 72"	DF4872 ( )	OF4872 ( )
48" x 96"	DF4896 ( )	OF4896 ( )
48" x 120"	DF48120 ( )	OF48120 ( )
48" x 144"	DF48144 ( )	OF48144 ( )

Specify color when ordering. Example: 24" x 36" aluminum frame with Wedgewood fabric DF243014.



\* Decorations not included

### Tempo



692  
Platinum



640  
Willow

### Highland



495  
Coffee  
Cream



384  
Stone



494  
Rose  
Mauve



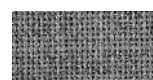
470  
Dover



### Designer Fabric Colors are:



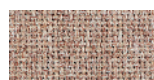
014  
Wedgewood



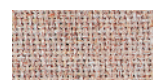
012  
Grey Mix



028  
Black



022  
Pumice



005  
Quartz



003  
Rose Quartz



## Bulletin Boards

### Natural Pebble Grain Cork

A natural bulletin board, this unique product is resilient and self-healing. Natural pebble grain cork is neutral in appearance and blends with many decors. Available with either a solid red oak wood frame with a high gloss lacquer finish or an aluminum frame with a clear satin anodized finish.

Size H&W	Red Oak Model#	Aluminum Model#
18" x 24"	OB1824	DB1824
24" x 36"	OB2436	DB2436
36" x 48"	OB3648	DB3648
36" x 60"	OB3660	DB3660
48" x 48"	OB4848	DB4848
48" x 60"	OB4860	DB4860
48" x 72"	OB4872	DB4872
48" x 96"	OB4896	DB4896
48" x 120"	OB48120	DB48120
48" x 144"	OB48144	DB48144



### Vinyl Impregnated Cork "VIC"

Aarco's VIC is the finest and most durable bulletin board surface available. Made from a combination of virgin cork composition, linseed oil and pigment. VIC is washable, fade resistant and remains resilient indefinitely. It is truly a **high performance** product that will endure years of heavy use.

Available with either a solid red oak wood frame with a high gloss lacquer finish or an aluminum frame with a clear satin anodized finish. All units are equipped with factory attached mounting hangers.

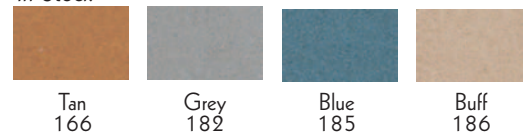
Size H&W	Aluminum Frame Model#	Red Oak Frame Model#
24" x 36"	DW2436 ( )	OW2436 ( )
36" x 48"	DW3648 ( )	OW3648 ( )
48" x 48"	DW4848 ( )	OW4848 ( )
48" x 72"	DW4872 ( )	OW4872 ( )
48" x 96"	DW4896 ( )	OW4896 ( )
48" x 120"	DW48120 ( )	OW48120 ( )
48" x 144"	DW48144 ( )	OW48144 ( )
48" x 192"	DW48192 ( )	OW48192 ( )

Specify color when ordering. Example: 24"x36" aluminum frame with tan vic surface DW/2436166.



#### Vinyl Impregnated Cork Colors are:

##### In Stock



##### Special Order





## **New!** Radius Corner Bulletin Board

This attractive radius corner design bulletin board combines a contemporary frame design with high performance functionality. Choose traditional natural cork (as show above) or the versatile burlap weave vinyl surface which is class B fire rated and available in a variety of colors and styles to enhance any interior.

H x W Size	Natural Cork Model#	* Burlap Weave Vinyl Model#
18" X 24"	ER1824	ERV1824 ( )
24" X 36"	ER2436	ERV2436 ( )
36" X 48"	ER3648	ERV3648 ( )
48" X 48"	ER4848	ERV4848 ( )
48" X 72"	ER4872	ERV4872 ( )
48" X 96"	ER4896	ERV4896 ( )

\* Specify color when ordering. Example: 18" x 24" with Denim ERV1824553.

### Tempo



692  
Platinum



640  
Willow

### Highland



495  
Coffee  
Cream



384  
Stone



494  
Rose  
Mauve



470  
Dover

## Reversible Free Standing Boards

Free standing boards provide the ability to communicate wherever needed. The two sided board can be configured with a variety of surfaces to fit your needs. Choose from a selection of writing surfaces or natural cork tack board. The reversible board conveniently rotates and firmly locks in place for stability. Choose from a solid red oak wood frame with a high gloss lacquer finish or an aluminum frame with a clear satin anodized finish. Both frame styles are shipped KD and assemble easily with basic tools. Optional swivel casters provide extra mobility and are available with either plastic or non-skid rubber wheels.

Board Size H & W	Red Oak Frame Model#	Aluminum Frame Model#
------------------------	----------------------------	-----------------------------

### Composition Chalkboard Both Sides

36" x 48"	RC3648	ARC3648
42" x 60"	RC4260	ARC4260
48" x 72"	RC4872	ARC4872

### Composition Chalkboard/Natural Cork

36" x 48"	RBC3648	ACB3648
42" x 60"	RBC4260	ACB4260
48" x 72"	RBC4872	ACB4872

### Natural Cork Both Sides

36" x 48"	RBB3648
42" x 60"	RBB4260
48" x 72"	RBB4872

### Melamine Markerboard Both Sides

36" x 48"	WRC3648	WARC3648
42" x 60"	WRC4260	WARC4260
48" x 72"	WRC4872	WARC4872

### Melamine Markerboard/Natural Cork

36" x 48"	WRBC3648	WACB3648
42" x 60"	WRBC4260	WACB4260
48" x 72"	WRBC4872	WACB4872

### Porcelain Markerboard Both Sides

36" x 48"	WRS3648	WARS3648
42" x 60"	WRS4260	WARS4260
48" x 72"	WRS4872	WARS4872

### Porcelain Chalkboard Both Sides

36" x 48"	RS3648	ARS3648
42" x 60"	RS4260	ARS4260
48" x 72"	RS4872	ARS4872

### Optional Swivel Casters

2 Locking-2 Non-Locking Rubber Non-Skid Swivel Casters	C-44
2 Locking-2 Non-Locking Plastic Swivel Casters	C-44A

### Model#



### Optional Swivel Casters

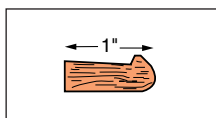




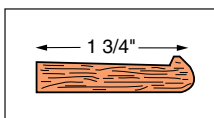
## Chalkboards



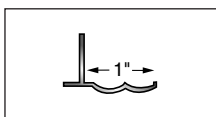
### Chalktray Profiles



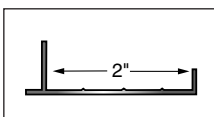
Red Oak Frames  
to 36" x 48"



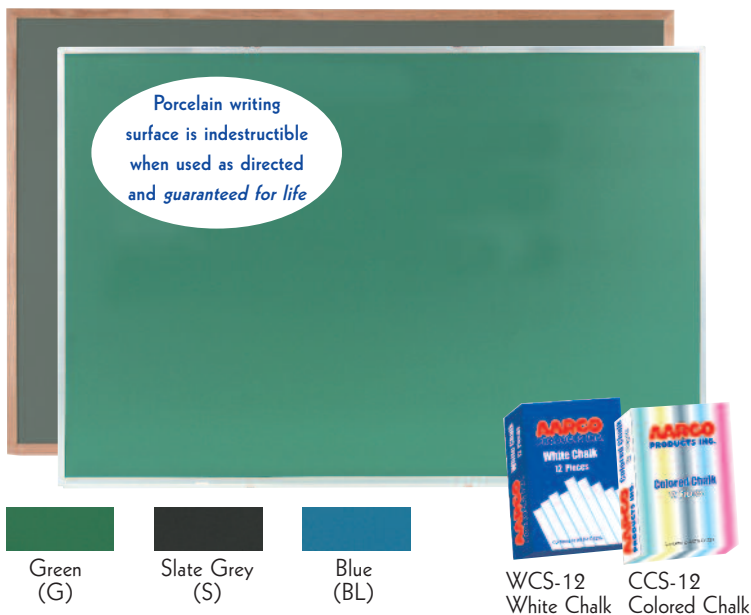
Red Oak Frames  
from 36" x 60"



Aluminum Frames  
to 36" x 48"



Aluminum Frames  
from 36" x 60"



Note: Add the color code at the end of the model # to indicate the required color, specify Green (G), Slate Gray (S) or Blue (BL).  
Example: 18"x24" Wood Frame with Green chalkboard OS1824G.

## Composition Chalkboards

- Durable slate coating on tempered hardboard
- Thick texture for rich chalk marks
- Excellent erasing qualities
- Economically priced
- Available with either a solid red oak wood frame with a high gloss lacquer finish or an aluminum frame with a clear satin anodized finish
- Full length chalk tray (see diagrams)
- Factory mounted hangers
- Choose green or black



Green



Black

Size H & W	Red Oak Frame Model#	Satin Anodized Aluminum Frame Model#
18" x 24"	OC1824	DC1824
24" x 36"	OC2436	DC2436
36" x 48"	OC3648	DC3648
36" x 60"	OC3660	DC3660
48" x 60"	OC4860	DC4860
48" x 72"	OC4872	DC4872
48" x 96"	OC4896	DC4896
48" x 120"	OC48120	DC48120
48" x 144"	OC48144	DC48144

Please specify Black(B) or Green(G) when ordering. Example:  
18"x24" Wood Frame with Green chalkboard OC1824G

## Porcelain on Steel Chalkboards

- Porcelain writing surface is indestructible when used as directed and *guaranteed for life*
- Thick texture for rich chalk marks
- Excellent erasing qualities
- Surface permits use of magnetic accessories
- Available with either a solid red oak wood frame with a high gloss lacquer finish or an aluminum frame with a clear satin anodized finish
- Full length chalk tray (see diagrams)
- Factory mounted hangers
- Aluminum foil backing provides moisture barrier
- Choose green, slate grey or blue

Size H & W	Red Oak Frame Model#	Satin Anodized Aluminum Frame Model#
18" x 24"	OS1824	DS1824
24" x 36"	OS2436	DS2436
36" x 48"	OS3648	DS3648
36" x 60"	OS3660	DS3660
48" x 60"	OS4860	DS4860
48" x 72"	OS4872	DS4872
48" x 96"	OS4896	DS4896
48" x 120"	OS48120	DS48120
48" x 144"	OS48144	DS48144
48" x 192"	OS48192	DS48192

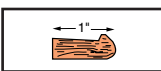
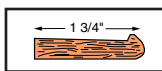
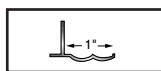
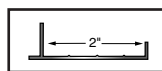


## General Purpose Commercial Series Melamine Markerboards (Non-Magnetic)

- Durable heat cured surface on tempered hardboard
- Smooth surface permits clear ink marks
- Excellent erasing qualities
- Unbeatable value
- Available with either a solid red oak wood frame with a high gloss lacquer finish or an aluminum frame with a clear satin anodized finish
- Full length chalk tray (see diagrams below)
- Factory mounted hangers

Size H & W	Red Oak Frame Model#	Satin Anodized Aluminum Frame Model#
18" x 24"	WOC1824	WAC1824
24" x 36"	WOC2436	WAC2436
36" x 48"	WOC3648	WAC3648
36" x 60"	WOC3660	WAC3660
48" x 60"	WOC4860	WAC4860
48" x 72"	WOC4872	WAC4872
48" x 96"	WOC4896	WAC4896

### Chalktray Profiles

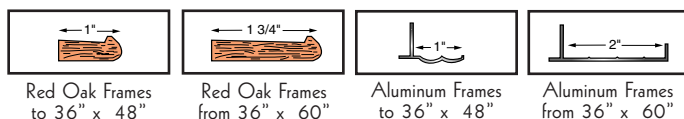
			
Red Oak Frames to 36" x 48"	Red Oak Frames from 36" x 60"	Aluminum Frames to 36" x 48"	Aluminum Frames from 36" x 60"



## Multi-Purpose Institutional Series Porcelain Enamel on Steel Markerboards

- Porcelain writing surface is indestructible when used as directed and *guaranteed for life*
- High contrast
- Excellent erasing qualities
- Surface permits use of magnetic accessories
- Available with either a solid red oak wood frame with a high gloss lacquer finish or an aluminum frame with a clear satin anodized finish
- Full length chalk tray (see diagrams below)
- Factory mounted hangers
- Aluminum foil backing provides moisture barrier

### Chalktray Profiles



Size H & W	Red Oak Frame Model#	Satin Anodized Aluminum Frame Model#
18" x 24"	WOS1824	WDS1824
24" x 36"	WOS2436	WDS2436
36" x 48"	WOS3648	WDS3648
36" x 60"	WOS3660	WDS3660
48" x 60"	WOS4860	WDS4860
48" x 72"	WOS4872	WDS4872
48" x 96"	WOS4896	WDS4896
48" x 120"	WOS48120	WDS48120
48" x 144"	WOS48144	WDS48144
48" x 192"	WOS48192	WDS48192

Aarco Dry Erase Markers include a set of 4 (red, blue, green, and black) reduced odor markers. Aarco markers dry quickly and do not leave a large residue.

### Model# PK

M-4 4

### Model# Size

E1 2" x 5" x 1"

E2 1 1/2" x 4" x 1"



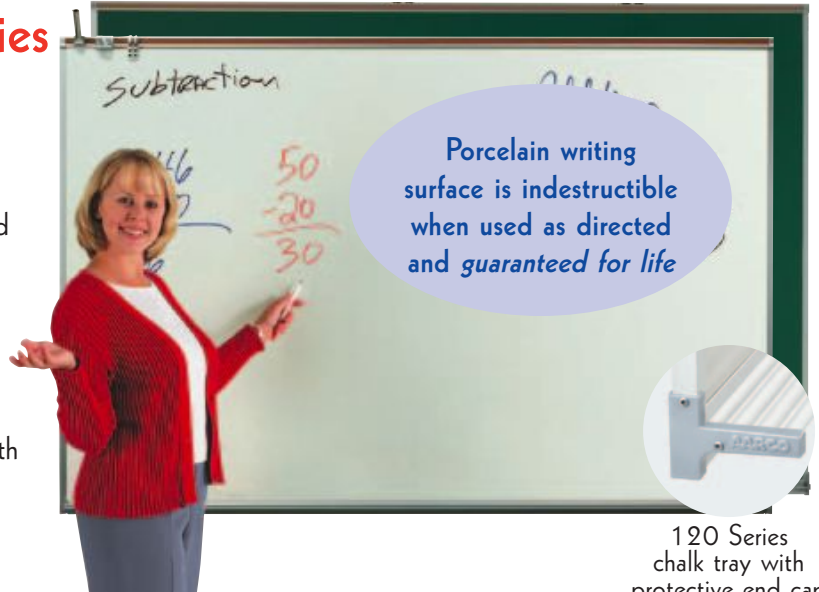
Aarco Board Cleaner: All markerboards require periodic cleaning. When necessary use Aarco Board Cleaner for best results.

B-1 8oz.



## All Purpose Professional Series Porcelain Enamel On Steel Markerboards and Chalkboards

- Porcelain writing surface is indestructible when used as directed and *guaranteed for life*
- High contrast
- Excellent erasing qualities
- Thick texture for rich chalk marks (chalkboard)
- Surface permits use of magnetic accessories
- Full length 120 series professional size chalk tray with protective end caps
- Factory attached mounting hangers
- Aluminum foil backing provides moisture barrier
- Equipped with a 1" map rail with tan cork insert and end caps
- One map hook is supplied for every 3' of board minimum of two per board.
- All trim, tray & map rails are aluminum with a satin anodized finish
- Optional powder coated frame and tray colors are available see page 16



120 Series  
chalk tray with  
protective end cap

Size H&W	Markerboard	Chalkboard
2' x 3'	120A-23M	120A-23C
3' x 4'	120A-34M	120A-34C
3' x 5'	120A-35M	120A-35C
4' x 5'	120A-45M	120A-45C
4' x 6'	120A-46M	120A-46C
4' x 8'	120A-48M	120A-48C
4' x 10'	120A-410M	120A-410C
4' x 12'	120A-412M	120A-412C
4' x 16'	120A-416M	120A-416C
4' x 16'	*120A-416M-2	*120A-416C-2

\* Two sections with spline joint seam. Accessories optional

\*\* Specify color when ordering. Example: 4'x6' aluminum frame with green chalkboard 120A-46CG.

### Writing Surfaces



White  
Markerboard



Green  
Chalkboard  
(G)



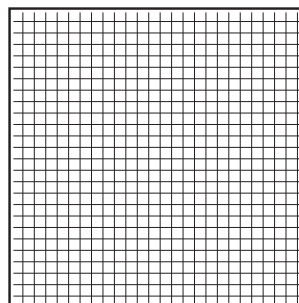
Slate  
Chalkboard  
(S)

(Available on request)

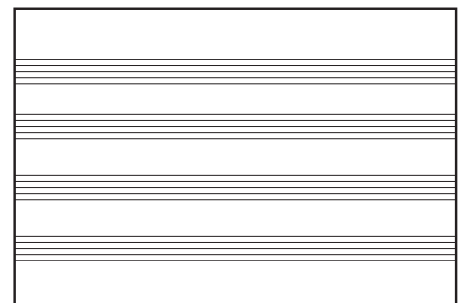
## Specialty Markerboards with Fused Lines and Graphics

These patterns are permanently **fused** with the ceramic steel surface of our markerboards making them virtually indestructible when used under normal conditions. The imprinted lines and graphics are UV, wear and scratch resistant and because they are fused within the surface they do not interfere with normal marker use.

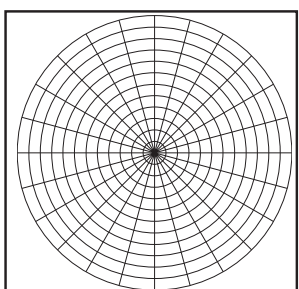
These patterns are offered both as independently framed units with full length chalktrays or as integral components of larger or combination boards.



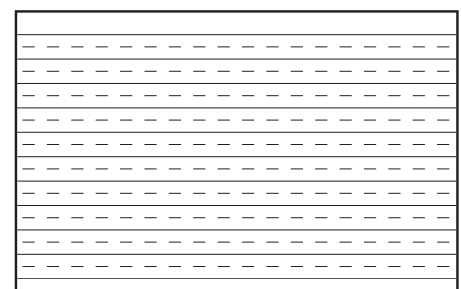
Graph Coordinates GC1204848 4x4



Music Staff Lines MS1204872 4x6



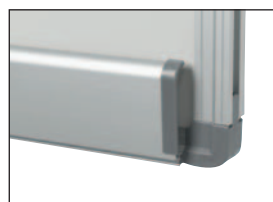
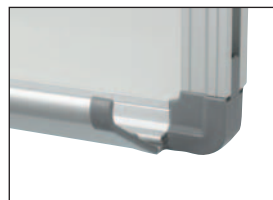
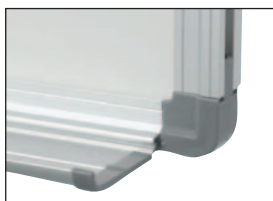
Polar Coordinates PC1204848 4x4



Penmanship Lines PL1204872 4x6



Porcelain writing  
surface is indestructible  
when used as directed  
and *guaranteed for life*

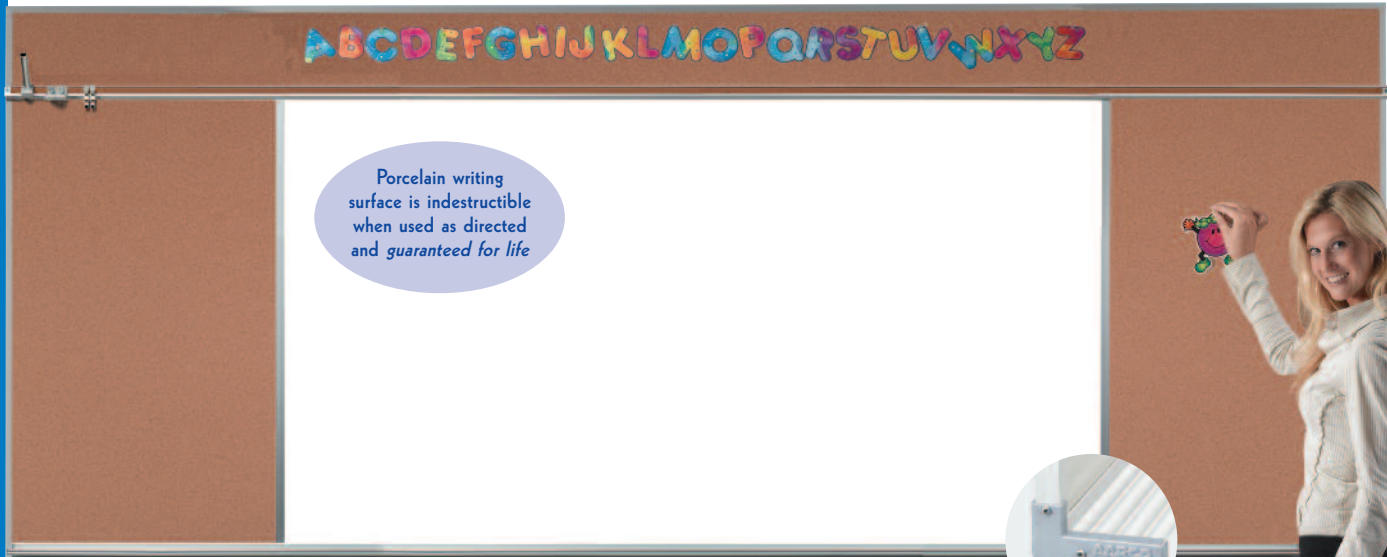


Covenient folding tray and  
protective end caps

## Designer Series Radius Corner Porcelain Enamel On Steel Markerboards

- Porcelain writing surface is indestructible when used as directed and *guaranteed for life*
- High contrast
- Excellent erasing qualities
- Surface permits use of magnetic accessories
- Radius corner frame adds a contemporary look
- Convenient folding chalk tray
- V3 high gloss surface is standard
- V2 low gloss surface is also available  
(requires regular cleaning for optimum performance)

H x W Size	Satin Anodized Frame		Black Powder Coated Frame	
	v3 Model#	v2 Model#	v3 Model#	v2 Model#
18" x 24"	ERP1824	ERP1824v2	ERP1824	ERP1824v2
24" x 36"	ERP2436	ERP2436v2	ERP2436	ERP2436v2
36" x 48"	ERP3648	ERP3648v2	ERP3648	ERP3648v2
48" x 48"	ERP4848	ERP4848v2	ERP4848	ERP4848v2
48" x 72"	ERP4872	ERP4872v2	ERP4872	ERP4872v2
48" x 96"	ERP4896	ERP4896v2	ERP4896	ERP4896v2



Porcelain writing surface is indestructible when used as directed and *guaranteed for life*



120 Series chalk tray with protective end cap

## Professional Markerboards, Chalkboards, Bulletin Boards and Combination Units

- Porcelain writing surface is indestructible when used as directed and *guaranteed for life*
- High contrast
- Excellent erasing qualities
- Thick texture for rich chalk marks (chalkboard)
- Surface permits use of magnetic accessories
- Tackboards are available with natural pebble grain cork, burlap textured vinyl and designer fabric.
- All writing board units are equipped with a 1" map rail with a tan cork insert and end caps. One map hook is supplied for every 3' of board minimum of two per board.
- All trim, tray and map rails are finished in satin anodized aluminum. Optional powder coated colors are available (see below).
- All 120 chalktrays are equipped with end caps.(see above).
- Chalk tray runs full length of writing surface.
- Chalkboards are available in green. Slate color on special request.

### Tackable Surfaces

#### Natural Pebble Grain Cork



DB  
Cork

#### Burlap Textured Vinyl

##### Tempo



692  
Platinum



640  
Willow

##### Highland



495  
Coffee  
Cream



384  
Stone



494  
Rose  
Mauve



470  
Dover

#### Designer Fabric Colors are:



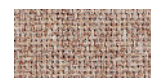
014  
Wedgewood



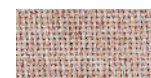
012  
Grey Mix



028  
Black



022  
Pumice



005  
Quartz



003  
Rose Quartz

### Writing Surfaces



White  
Markerboard



Green  
Chalkboard  
(G)



Slate  
Chalkboard  
(S)

(Available on request)

Specify chalkboard color when ordering. Example: 4'x6' aluminum frame with green chalkboard 120A-46CG.

### Optional Powder Coated Frame and Trim Colors

To order add corresponding letter for color to part number  
Example: 120A-23M  
with Red frame 120A-23MR



R



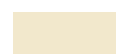
B



G



W



I



BK



FG

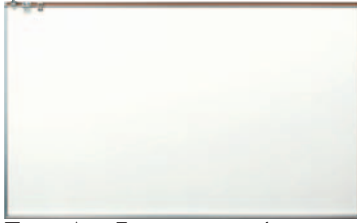


EB

### Specify Tackboard Surface

Example for Model #120D-48M-242 with Denim Vinyl Tackboard. Order 120D-48M-242553

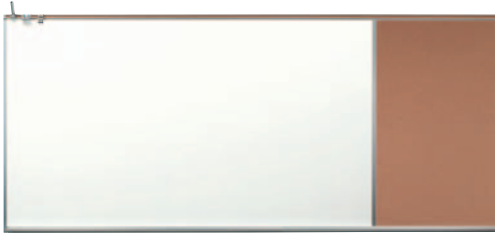




Type A - Features porcelain on steel markerboards and chalkboards (Color green is standard on chalkboards, black is optional) Other sizes available see page 14.

Size H-W	Markerboard	Chalkboard
4' x 8'	120A-48M	120A-48C
4' x 10'	120A-410M	120A-410C
4' x 12'	120A-412M	120A-412C
4' x 16'	120A-416M	120A-416C
4' x 16'	*120A-416M-2	*120A-416C-2

\* Two sections with spline joint seam. Accessories optional



Type CR & CL - Specify color, type and width of bulletin board and indicate left or right of writing board. Unit size is overall. Writing board size is determined by deducting bulletin board from unit size.

Overall Size H-W	Markerboard	Chalkboard	Tackboard Width
4' x 4'	120-44M-31	120C-44C-31	1'
4' x 6'	120-46M-42	120C-46C-42	2'
4' x 8'	120C-48M-62	120C-48C-62	2'
4' x 10'	120C-410M-82	120C-410C-82	2'
4' x 12'	120C-412M-84	120C-412C-84	4'
4' x 16'	120C-416M-124	120C-416C-124	4'

CR-Posting surface on right side facing board (See above)

CL-Posting surface on left side facing board

Specify Tackboard Surface. See example on opposite page.



Type E - Tackboard is 12" high, writing board is 36" high. Specify color and type of tackboard.

Overall Size H-W	Markerboard	Chalkboard
4' x 4'	120E-44M	120E-44C
4' x 6'	120E-46M	120E-46C
4' x 8'	120E-48M	120E-48C
4' x 10'	120E-410M	120E-410C
4' x 12'	120E-412M	120E-412C
4' x 16'	120E-416M	120E-416C

Specify Tackboard Surface. See example on opposite page.

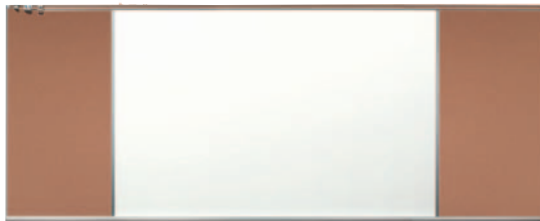


Type B - Features fire rated burlap texture vinyl, designer fabric or natural cork. Request price for designer fabric.

Size H-W	Model#	H-W	Model#
2' x 3'	120B-23	4' x 8'	120B-48
3' x 4'	120B-34	4' x 10'	120B-410
4' x 4'	120B-44	4' x 12'	120B-412
4' x 6'	120B-46	4' x 16'	120B-416

Two sections with butt joint seam available on request

Specify Tackboard Surface. See example on opposite page.



Type D - Specify color type and width of tackboard at each end.

Overall Size H-W	Markerboard	Chalkboard	Tackboard Width
4' x 8'	120D-48M-242	120D-48C-242	2'
4' x 10'	120D-410M-262	120D-410C-262	2'
4' x 12'	120D-412M-282	120D-412C-282	2'
4' x 16'	120D-416M-2122	120D-416C-2122	2'

Specify Tackboard Surface. See example on opposite page.



Type F - Top tackboard is 12" H. Specify color, type and width of bulletin boards. Writing boards width is determined by reducing the bulletin board total width from the overall unit size

Overall Size H-W	Markerboard	Chalkboard	Tackboard Width
4' x 8'	120F-48M-242	120F-48C-242	2'
4' x 10'	120F-410M-262	120F-410C-262	2'
4' x 12'	120F-412M-282	120F-412C-282	2'
4' x 16'	120F-416M-2122	120F-416C-2122	2'

Specify Tackboard Surface. See example on opposite page.

\* Both boards shown with optional map rail  
(See page 22 for map rails and accessories).



420 Series  
chalk tray with  
protective end cap

## Architectural High Performance Series Markerboards and Chalkboards

- Porcelain writing surface is indestructible when used as directed and guaranteed for life
- High contrast
- Excellent erasing qualities
- Thick texture for rich chalk marks (chalkboard)
- Surface permits use of magnetic accessories
- 420 series 1 3/4" high performance trim with satin anodized finish
- Full length 420 series 3 1/2" chalk tray with molded protective end caps
- Factory mounted hangers
- Aluminum foil backing provides moisture barrier
- Optional map rail and accessories available (see pg 22)
- Optional powder coated frame and tray colors are available (see page 16)
- V3 high gloss surface is standard
- V2 low gloss markerboard surface is also available (requires regular cleaning for optimum performance)

Specify optional v2 surface when ordering. Example: 48"x72" markerboard with optional v2 surface 420-007M-4872v2.

### High Performance Series Markerboard

Size	Model#
48" x 72"	420-007M-4872
48" x 96"	420-007M-4896
48" x 120"	420-007M-48120
48" x 144"	420-007M-48144
48" x 192"	420-007M-48192

### High Performance Series Chalkboard

Size	Model#
48" x 72"	420-007C-4872
48" x 96"	420-007C-4896
48" x 120"	420-007C-48120
48" x 144"	420-007C-48144
48" x 192"	420-007C-48192



## Architectural High Performance Series

### With unique wood grained aluminum trim

Wood-Look finish is a unique powder coated process that combines the warm rich appearance of natural hardwood with the rugged and enduring qualities of extruded aluminum. Available in oak, cherry or walnut wood grain finish.

### Natural Pebble Grain Cork Bulletin Board with New Wood-Look Finish Trim

- Natural pebble grain cork tack board surface
- 420 series 1 3/4" high performance trim
- Factory mounted hangers
- Aluminum foil backing provides moisture barrier

Size H & W	Oak Model	Cherry Model	Walnut Model
36" x 48"	DBO3648	DBW3648	DBWW3648
48" x 48"	DBO4848	DBW4848	DBWW4848
36" x 60"	DBO3660	DBW3660	DBWW3660
48" x 60"	DBO4860	DBW4860	DBWW4860
48" x 72"	DBO4872	DBW4872	DBWW4872
48" x 96"	DBO4896	DBW4896	DBWW4896
48" x 120"	DBO48120	DBW48120	DBWW48120
48" x 144"	DBO48144	DBW48144	DBWW48144

Standard with Natural Cork

### Markerboards with Porcelain Writing Surface and New Wood-Look Finish Trim

- Porcelain writing surface is indestructible when used as directed and *guaranteed for life*
- High contrast
- Excellent erasing qualities
- Surface permits use of magnetic accessories
- 420 series 1 3/4" high performance trim
- Full length 420 series 3 1/2" chalk tray with molded protective end caps
- Factory mounted hangers
- Aluminum foil backing provides moisture barrier
- V3 high gloss surface is standard
- V2 low gloss markerboard surface is also available (requires regular cleaning for optimum performance)

Specify optional v2 surface when ordering. Example: 48"x72" markerboard with Oak Wood-look Frame and optional v2 surface 420OD4872v2.

Size H & W	Oak Model	Cherry Model	Walnut Model
36" x 48"	420OD3648	420WD3648	420WWD3648
48" x 48"	420OD4848	420WD4848	420WWD4848
36" x 60"	420OD3660	420WD3660	420WWD3660
48" x 60"	420OD4860	420WD4860	420WWD4860
48" x 72"	420OD4872	420WD4872	420WWD4872
48" x 96"	420OD4896	420WD4896	420WWD4896
48" x 120"	420OD48120	420WD48120	420WWD48120
48" x 144"	420OD48144	420WD48144	420WWD48144
48" x 192"	420OD48192	420WD48192	420WWD48192

#### New Wood-Look Finishes



Cherry



Oak



Walnut



## Renews old boards in minutes



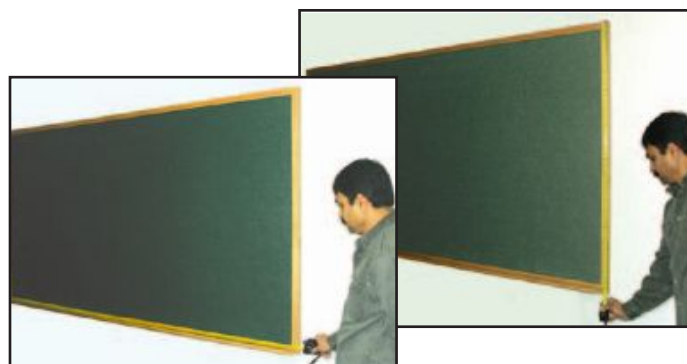
Place OverBoard over existing Board (use adhesive where necessary)



Attach OverBoard with screws through pre-drilled holes in frame

Aarco Products' Overboard resurfacing system is designed to easily install new porcelain surfaces over existing chalkboards, saving time and money. Units are custom fabricated to be congruent with the originally installed material, thus eliminating the need for removal.

- Eliminates costly labor to repair old frames and surfaces
- Eliminates costly labor and downtime related to asbestos removal from old structures
- Provides high performance retrofitting of old boards  
Guaranteed for 50 years
- Surface is Aarco porcelain on steel markerboard or chalkboard with 1/4" tempered hardboard core and .005 foil moisture seal
- Framed on four sides with satin anodized aluminum
- Install in minutes with pre-drilled holes over existing frame
- Writing surfaces are guaranteed for 50 years
- Adhesive supplied for spotting on old surface
- V3 high gloss surface is standard
- V2 low gloss markerboard surface is also available (requires regular cleaning for optimum performance)



### Measure existing board

Provide your exact measurements and use next larger size for pricing. If existing board has a chalktray, measure from the top of the chalktray to the top of the frame. Then measure the exact outside width of the frame.

**When ordering provide your exact measurements and use next larger model number. For pricing, exact measurement must be provided. Specify color when ordering.**

Standard Sizes	Model#
4' h x 6' w	OVB 4872
4' h x 8' w	OVB 4896
4' h x 10' w	OVB 48120
4' h x 12' w	OVB 48144
4' h x 16' w	OVB 48192

Example:

- Actual size as measured 34 3/8" h x 70 1/2" w
- Choose OVB4872 for pricing
- Order OVB 34 3/8" h x 70 1/2" w
- Specify optional v2 surface when ordering.  
Example: OVB 34 3/8" h x 70 1/2" w v2 .

## Floor Mounted Units with Full Vertical Movement

Vertical Sliding Units are efficiently designed to maximize the use of valuable wall space. Equipped with two premium Vitre Steel porcelain markerboards with ultra light honey-comb backing that are counterbalanced and can be raised or lowered smoothly and with fingertip ease. A third rear stationary markerboard can be fully exposed by positioning the two sliding boards behind the fixed kick panel. Kick panels are equipped with attractive Burlap Weave vinyl which is durable and washable.

- V3 high gloss surface is standard
- V2 low gloss markerboard surface is also available (requires regular cleaning for optimum performance)

Specify optional v2 surface when ordering.  
Example: 10' x 8' markerboard with optional v2 surface FFVSU96-2v2.

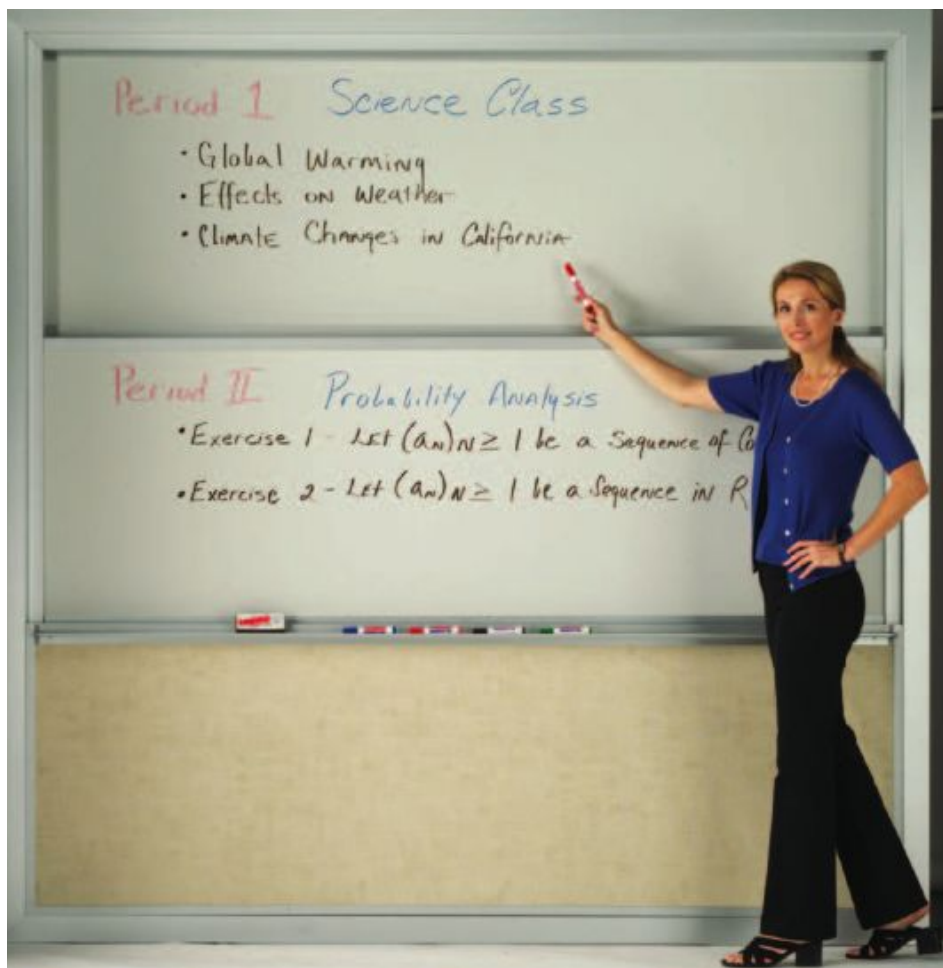
**Size**                      **Model#**

10' h x 8' w   FFVSU96-2

10' h x 12' w   FFVSU144-2

10' h x 16' w   FFVSU192-2

Custom sizes and configurations available.



**High Performance**

Markers and erasers not included

**Hide a panel design**

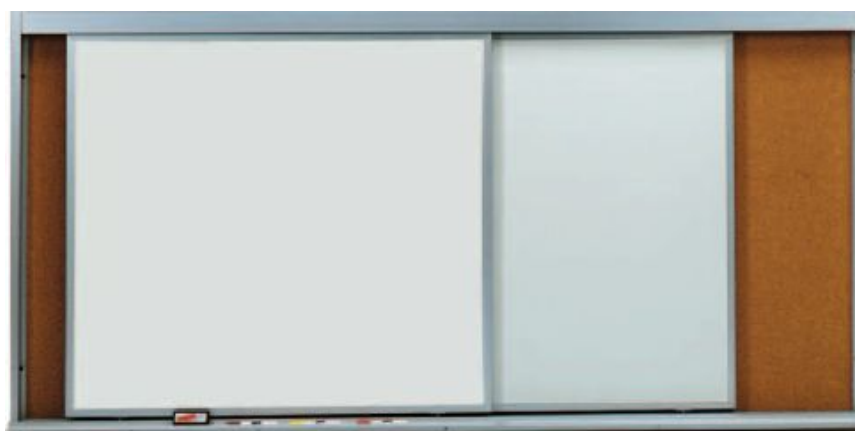
Sliding panels disappear behind the decorative kick panel and provides multi-media advantage

## Horizontal Sliding Units

Horizontal Sliding Units maximize the use of valuable wall space. They can be configured with up to four sliding markerboards and one full width tackboard in the same amount of space as one traditional board.

These high performance units are equipped with two sliding and one stationary premium Vitre Steel porcelain markerboards (\*chalkboards also available see below). The boards travel smoothly on nylon top mounted roller tracks and are held fast in place by the bottom mounted guide bearings. Allowing the user to easily position the boards as needed.

Built to last, they are constructed with durable heavy gauge aluminum trim with an attractive anodized finish. The back fixed full width panel has a 1/4" thick natural cork posting surface.



**High Performance**

Markers and erasers not included

	2 TRACK UNITS	3 TRACK UNITS	4 TRACK UNITS
Size	Model#	Model#	Model#
4' h x 8' w	HSU48-2	HSU48-3	HSU48-4
4' h x 12' w	HSU412-2	HSU412-3	HSU412-4
4' h x 16' w	HSU416-2	HSU416-3	HSU416-4

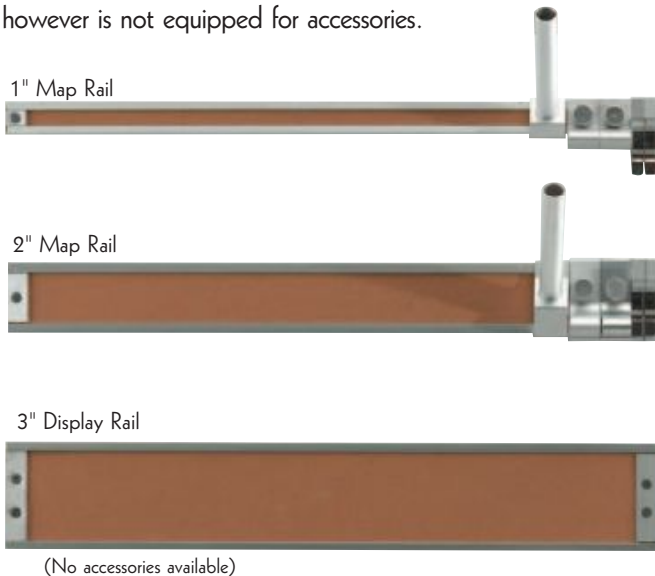
\*Also available with Green Porcelain Chalkboards. To order, specify by adding "C" to model. Example: HSU48-2C. Custom sizes and configurations available.

## Map and Display Rails

Map rails are an economical method of displaying notes, charts, pictures, artwork and other important display materials. Commonly found in classrooms where accessories are used to hold flags, maps and projection screens. Also great for corridors and conference rooms.

Map rails are also great for displaying seasonal cards, photographs and announcements.

Choose from 1" high or 2" high in various lengths to best meet your needs. Map rails are made of high quality extruded aluminum with a satin anodized finish. All rails are equipped with Tan Cork which does not shrink or discolor over time, and aluminum end caps. Also available is our new 3" display rail which has all the displaying qualities as our 1" and 2" map rails, however is not equipped for accessories.



### 1" Display rail/with cork insert

Model#	Length	6 Pack Model#
MR1-72	72"	MR1-72-6
MR1-96	96"	MR1-96-6
MR1-144	144"	MR1-144-6
MR1-192	192"	MR1-192-6

### 1" Accessories:

Model#	Description
HC-1	1" Hook/clip
MW-1	1" Map winders
FH-1	1" Flag holder
ES-1	End stops

### 2" Display rail/with cork insert

Model#	Length	6 Pack Model#
MR2-72	72"	MR2-72-6
MR2-96	96"	MR2-96-6
MR2-144	144"	MR2-144-6
MR2-192	192"	MR2-192-6

### 2" Accessories:

Model#	Description
HC-2	2" Hook/clip
MW-2	2" Map winders
FH-2	2" Flag holder
ES-2	End stops

### 3" Display rail/with cork insert

Model#	Length
DR2-72	72"
DR2-96	96"
DR2-144	144"
DR2-192	192"

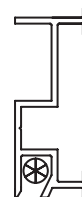
### 3" Accessories:

Model#	Description
ES-3	End stops

## Paper Grippers

Paper Grippers™ are useful when push pins or thumb tacks are not convenient or could damage the display materials. The Gripper uses gravity to hold small vinyl rolls down, thus trapping paper sheets inside the specially designed extrusion. To remove paper, simply push up to release the rollers' grip and move the paper in a circular motion until it is free.

Choose the Little Gripper for paper gripping requirements or the Big Gripper which also incorporates all of the features found in the 2" map rail, including the benefits of the map rail accessories which are sold separately.



The Big Gripper



The Little Gripper

### Little Gripper™

Model#	Length
LG24	24"
LG36	36"
LG48	48"
LG72	72"

### Big Gripper™

Model#	Length
BG24	24"
BG36	36"
BG48	48"
BG72	72"



## Unframed Material

A wide variety of unframed materials are also offered for various conditions for both writing and display surfaces. Unframed sheets are used to restore old boards or utilized in frame supplied by others.

### How to Order all unframed material

Choose **Model**, **Height**, **Width/Length**, **Surface/Color**  
OBCH 5 6 Wv3

5' Height by 6' Wide Porcelain Markerboard Laminated to 1/4" Tempered Hardboard with .005 foil.

Example: OBCH56Wv3

### VITRE-STEEL Porcelain on Steel Writing Surfaces

Aarco's Vitre-Steel is produced by a continuous coil process for highest quality and consistent finish. Vitre-Steel is a strong, hard, non-porous surface that is virtually indestructible.

#### Porcelain Skins Unbacked

	Model	Std. Hts.	Std. Width
Porcelain Marker Board Skins	OBWS	4'	4',6',8',10',12',16'
Porcelain Marker Board Skins	OBWS	5'	4',6',8',10',12',16'
Porcelain Chalk Board Skins	OBCS	4'	4',6',8',10',12',16'
Porcelain Chalk Board Skins	OBCS	5'	4',6',8',10',12',16'

#### Porcelain Laminated to 1/4" Tempered Hardboard with .005 foil

	Model	Std. Hts.	Std. Width
Porcelain Marker Board Backed	OBWH	4'	4',6',8',10',12',16'
Porcelain Marker Board Backed	OBWH	5'	4',6',8',10',12',16'
Porcelain Chalk Board Backed	OBCH	4'	4',6',8',10',12',16'
Porcelain Chalk Board Backed	OBCH	5'	4',6',8',10',12',16'

#### Chalkboard Colors:



#### Markerboard Colors:



### Melamine Marker Board

Marker Board on either 1/4" or 1/8" Tempered Hardboard

	Model	Std. Hts.	Std. Width
Marker Board on 1/4"	OBMM14	4'	4',6',8'
Marker Board on 1/8"	OBMM18	4'	4',6',8'



### Composition Chalk Board

Chalk Board on either 1/4" or 1/8" Tempered Hardboard

	Model	Std. Hts.	Std. Width
Chalk Board on 1/4"	OBCC14	4'	4',6',8',10',12'
Chalk Board on 1/8"	OBCC18	4'	4',6',8'



800.246.6038

### Vinyl Impregnated Cork "VIC" Cork

Aarco's VIC Cork is the finest and most durable bulletin board surface available. VIC is washable, fade resistant and remains resilient indefinitely.

#### 1/4" "VIC" Cork Laminated to 1/4" Tempered Hardboard

	Model	Std. Hts.	Std. Width
VIC on Hard Board	OBVICH	4'	4',6',8',10',12',16'

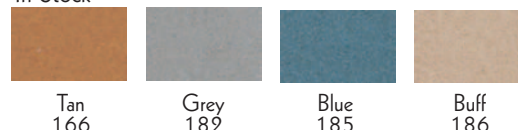
#### 1/4" "VIC" Cork on a Roll

	Model	Height	Length
1/4" "VIC" Cork	OBVIC14	4'	*Rolls up to 90'

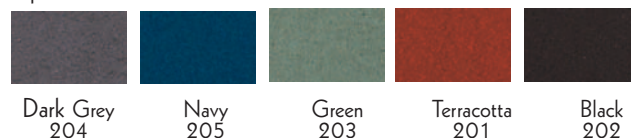
\*Specify length in feet

#### Vinyl Impregnated Cork Colors are:

##### In Stock



##### Special Order



Specify color when ordering. Example: with tan vic surface OBVICH166

### Natural Cork

Pure Virgin Cork is a natural bulletin board. This unique product is resilient and self-healing. Natural Cork is neutral in appearance and blends with many decors.

#### 1/4" Natural Cork Laminated to 1/4" Tempered Hardboard

Model	Std. Hts.	Std. Width
OBNCH	4'	4',6',8',10',12',16'

#### 1/8" Natural Cork Laminated to 3/8" Fibre Board

Model	Std. Hts.	Std. Width
OBNCF	4'	4',6',8',10',12'

#### Natural Cork on a Roll

	Model	Std. Hts.	Std. Width
1/4" Natural Cork	OBNC14	4'	*Rolls up to 90'
1/8" Natural Cork	OBNC18	4'	*Rolls up to 90'
1/16" Natural Cork	OBNC116	4'	*Rolls up to 90'
1/32" Natural Cork	OBNC132	4'	*Rolls up to 90'

\*Specify length in feet



Adhesive available upon request

## Projection Screens

AarcoVision™ Projection Screens are available as Wall Mounted or Floor Standing models. All are available in Matte white surface with black borders.

### Motorized, Electronically Operated Projection Screens

Aarco Products' Motorized Projection Screens offers advanced motor system that is smooth, quiet and fast. Standard units feature "plug-in" electronic connections for fast, convenient installation. Units are equipped with an in-line control panel that mounts easily to any wall surface. Impress your audience with AarcoVision's optional VHF wireless remote that allows full operation of the screen from up to 50 feet away. Great for classrooms, conference rooms, cinemas and presentation rooms. Units are equipped with factory attached brackets for mounting on ceilings or walls.

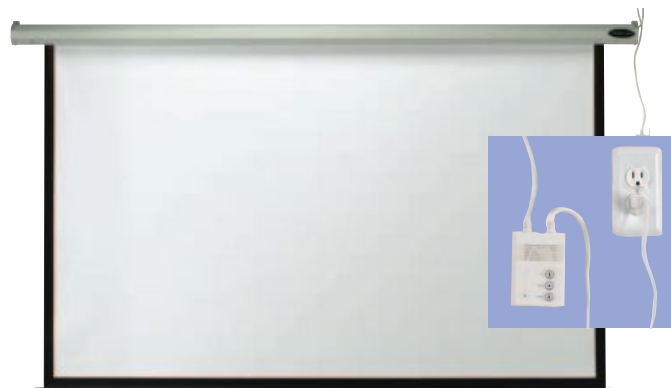
Matte White  
Model #

Size  
H&W

MPS-50	50" x 50"
MPS-70	70" x 70"
MPS-84	84" x 84"

Power: 110v

Optional VHF wireless remote VHF-1



Pre-wired controls and plug allow for easy installation.  
(Hard wiring not required)



### Manual Wall Mounted Projection Screens

Cases are heavy gauge steel construction and have factory attached mounting brackets.

Matte White  
Model #

Size  
H&W

APS-50	50" X 50"
APS-60	60" X 60"
APS-70	70" X 70"
APS-84	84" X 84"

### Extension Brackets

Designed to extend your projection screen away from the wall to avoid obstacles.

Size Model#

6"	EX B6
10" x 14"	EXB10
6"	EX B6S

#### 6" brackets EXB6

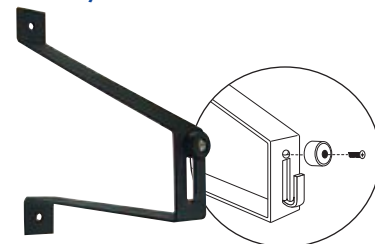


#### 10" x 14" brackets EXB10



10" x 14" Brackets can be installed in either direction

#### Security brackets EXB6S



### Tripod - Floor Standing Projection Screens

Floor Standing Projection Screens feature a completely collapsible tripod stand for easy storage and portability.

Matte White  
Model#

H&W

TPS-50	50" x 50"
TPS-70	70" x 70"
TPS-84	84" x 84"

Keystone Eliminator



## Conference Cabinets

Aarco Products' Conference Cabinets are perfectly suited to blend with traditional and contemporary interiors. Choose from a wide selection of laminates or hand finished hardwood veneers.

Standard units are 36" high x 48" wide or 48" high x 48" wide when closed. Doors open on continuous hinges to reveal a porcelain on steel markerboard center panel and fabric covered board on the inside of each door. The left side door features a chart clamp that holds un-punched paper pads up to 19" wide. The center section also features a fully concealed, retractable projection screen.

All units have an overall depth of 5" and hang securely on concealed mounting brackets. Markers, erasers and other supplies may be stored inside while doors are held shut by magnetic catches.

Colors Available



## Enclosed Melamine Planning Boards

Hardwood framed walnut or oak laminate doors provide beauty and privacy for messages on a melamine markerboard. Inside doors are natural cork for posting. Doors stay closed with magnetic catches. Overall exterior depth is 3". This unit is excellent for concealing confidential memoranda.

Size H & W	Oak Model	Walnut Model	Cherry Model
36" x 36"	OP-36	WP-36	MP-36
40" x 40"	OP-40	WP-40	MP-40
48" x 48"	OP-48	WP-48	MP-48



### Laminate

Size H & W	Oak Model	Walnut Model	Cherry Model
36" x 48"	OC-1	WC-1	MC-1
48" x 48"	OC-2	WC-2	MC-2

### Hardwood Veneer

Size H & W	Oak Model	Walnut Model	Cherry Model
36" x 48"	OVC-1	WVC-1	MVC-1
48" x 48"	OVC-2	WVC-2	MVC-2

### Tripod Easel



### Flip Fold Easel



## Portable Whiteboard Easels

- Choose Tripod or Flip Fold
- Both units conveniently fold for portability
- Adjustable whiteboard writing surface can be used with magnetic accessories
- Flip chart clip

	Black Model	Silver Model
Tripod Easel	TE1BK	TE1S
Flip Fold Easel	FE1BK	FE1S





## Enclosed Changeable Letter Boards with Red Oak Frame

Aarco Products' Red Oak Enclosed Changeable Letter Boards are made of solid North American Red Oak, milled to perfection and finished with a high gloss clear lacquer.

Corners are crafted with hairline mitres and sturdily fastened for a durable, long life.

Standard features include: Lockable doors, acrylic safety glass windows, continuous hinges, concealed mounting brackets and a felt covered grooved panel that accepts plastic letters with tabs positioned at 1/4" centers. Use Arao universal single tab changeable letters see page 37.

Units are available in natural oak finish or stained in either walnut or cherry. All have a high gloss clear lacquer finish.

Add your personalized inscription to any of our perfectly manufactured cabinets. Headers are white, opaque acrylic with black cut vinyl letters. Standard typeface is Clear Gothic. See page 41 for optional typefaces and customized services.

Tempered glass doors available as an option.

### Frame Colors Available



### Felt letter panel optional colors



## Enclosed Changeable Letter Boards with Headers

# Of Doors	Size H & W	Oak Model	Walnut Model	Cherry Model
1	24" x 18"	ODC2418H	WDC2418H	CDC2418H
1	36" x 24"	ODC3624H	WDC3624H	CDC3624H
1	36" x 30"	ODC3630H	WDC3630H	CDC3630H
1	48" x 36"	ODC4836H	WDC4836H	CDC4836H
2	36" x 48"	ODC3648H	WDC3648H	CDC3648H
2	36" x 60"	ODC3660H	WDC3660H	CDC3660H
2	36" x 72"	ODC3672H	WDC3672H	CDC3672H
2	48" x 60"	ODC4860H	WDC4860H	CDC4860H
2	48" x 72"	ODC4872H	WDC4872H	CDC4872H
3	36" x 72"	ODC3672-3H	WDC3672-3H	CDC3672-3H
3	48" x 72"	ODC4872-3H	WDC4872-3H	CDC4872-3H
3	48" x 96"	ODC4896-3H	WDC4896-3H	CDC4896-3H

## Enclosed Changeable Letter Boards

# Of Doors	Size H & W	Oak Model	Walnut Model	Cherry Model
1	24" x 18"	ODC2418	WDC2418	CDC2418
1	36" x 24"	ODC3624	WDC3624	CDC3624
1	36" x 30"	ODC3630	WDC3630	CDC3630
1	48" x 36"	ODC4836	WDC4836	CDC4836
2	36" x 48"	ODC3648	WDC3648	CDC3648
2	36" x 60"	ODC3660	WDC3660	CDC3660
2	36" x 72"	ODC3672	WDC3672	CDC3672
2	48" x 60"	ODC4860	WDC4860	CDC4860
2	48" x 72"	ODC4872	WDC4872	CDC4872
3	36" x 72"	ODC3672-3	WDC3672-3	CDC3672-3
3	48" x 72"	ODC4872-3	WDC4872-3	CDC4872-3
3	48" x 96"	ODC4896-3	WDC4896-3	CDC4896-3



Non-removable letter panels are standard with black felt. See optional colors above.



## Enclosed Bulletin Boards with Red Oak Frame

Aarco Products' Red Oak Enclosed Bulletin Boards are made of solid North American Red Oak, milled to perfection and finished with a high gloss clear lacquer.

All corners are sturdily fastened and glued for durability. Standard features include: Lockable doors, acrylic safety glass windows, continuous hinges, concealed mounting brackets and natural pebble grain cork background.

Units are available in natural oak finish or stained in either walnut or cherry. All have a high gloss clear lacquer.

Add your personalized inscription to any of our perfectly manufactured cabinets. Headers are white opaque acrylic with black cut vinyl letters. Standard type face is Clear Gothic. See page 41 for optional typefaces and customized services.

Tempered glass doors available as an option.

### Frame Colors Available



Walnut



Oak



Cherry



Add an optional removable letter panel

- Black felt standard  
See page 26 for other colors
- Use Aarco universal single tab letters  
See page 37

## Enclosed Bulletin Boards with Headers

# Of Doors	Size H & W	Oak Model	Walnut Model	Cherry Model	Removable Letter Panel
1	24" x 18"	OBC2418RH	WBC2418RH	CBC2418RH	RHI2418RH
1	36" x 24"	OBC3624RH	WBC3624RH	CBC3624RH	RHI3624RH
1	36" x 30"	OBC3630RH	WBC3630RH	CBC3630RH	RHI3630RH
1	48" x 36"	OBC4836RH	WBC4836RH	CBC4836RH	RHI4836RH
2	36" x 48"	OBC3648RH	WBC3648RH	CBC3648RH	RHI3624RH
2	36" x 60"	OBC3660RH	WBC3660RH	CBC3660RH	RHI3630RH
2	36" x 72"	OBC3672RH	WBC3672RH	CBC3672RH	RHI3636RH
2	48" x 60"	OBC4860RH	WBC4860RH	CBC4860RH	RHI4830RH
2	48" x 72"	OBC4872RH	WBC4872RH	CBC4872RH	RHI4836RH
3	36" x 72"	OBC3672-3RH	WBC3672-3RH	CBC3672-3RH	RHI3624RH
3	48" x 72"	OBC4872-3RH	WBC4872-3RH	CBC4872-3RH	RHI4824RH
3	48" x 96"	OBC4896-3RH	WBC4896-3RH	CBC4896-3RH	RHI4832RH

## Enclosed Bulletin Boards

# Of Doors	Size H & W	Oak Model	Walnut Model	Cherry Model	Removable Letter Panel
1	24" x 18"	OBC2418R	WBC2418R	CBC2418R	RR2418F
1	36" x 24"	OBC3624R	WBC3624R	CBC3624R	RR3624F
1	36" x 30"	OBC3630R	WBC3630R	CBC3630R	RR3630F
1	48" x 36"	OBC4836R	WBC4836R	CBC4836R	RR4836F
2	36" x 48"	OBC3648R	WBC3648R	CBC3648R	RR3624F
2	36" x 60"	OBC3660R	WBC3660R	CBC3660R	RR3630F
2	36" x 72"	OBC3672R	WBC3672R	CBC3672R	RR3636F
2	48" x 60"	OBC4860R	WBC4860R	CBC4860R	RR4830F
2	48" x 72"	OBC4872R	WBC4872R	CBC4872R	RR4836F
3	36" x 72"	OBC3672-3R	WBC3672-3R	CBC3672-3R	RR3624F
3	48" x 72"	OBC4872-3R	WBC4872-3R	CBC4872-3R	RR4824F
3	48" x 96"	OBC4896-3R	WBC4896-3R	CBC4896-3R	RR4832F



## Enclosed Bulletin Boards with Red Oak Frame & Crown Molding

Keep your information secured while displaying it effectively with our beautiful enclosed Bulletin Boards featuring a decorative top. The Crown moulding adds an elegance never before offered on a standard product. Units are equipped with natural cork posting surfaces, warm natural oak frames, full length hinges, security locks and concealed mounting hardware. Tempered glass doors available as an option.

Size H&W	# Of Doors	Natural Oak Model #	Walnut Model #	Cherry Model #
36" x 24"	1	OBC3624RC	WBC3624RC	CBC3624RC
36" x 48"	2	OBC3648RC	WBC3648RC	CBC3648RC
36" x 60"	2	OBC3660RC	WBC3660RC	CBC3660RC
36" x 72"	3	OBC3672RC	WBC3672RC	CBC3672RC
48" x 72"	3	OBC4872RC	WBC4872RC	CBC4872RC
48" x 96"	3	OBC4896RC	WBC4896RC	CBC4896RC



## Souvenir and Memorabilia Display Case with Red Oak Frame



Display collectables, keepsakes, awards, jerseys or any type of memorabilia protected in this attractive display case. Constructed with solid North American red oak and finished with a high gloss lacquer finish. Choose from three hand stained finishes that will complement any décor. Single door design allows for maximum viewable area. Tempered glass doors available as an option. Natural cork background is standard. Custom sizes and alternative backgrounds are available upon request

Size H&W	Natural Oak Model #	Walnut Model #	Cherry Model #
24" x 18"	OBC2418S	WBC2418S	CBC2418S
24" x 24"	OBC2424S	WBC2424S	CBC2424S
36" x 24"	OBC3624S	WBC3624S	CBC3624S
36" x 48"	OBC3648S	WBC3648S	CBC3648S







## Hinged Door Units

Neat, simple and affordable, Aluminum Frame, Natural Cork and Changeable Letter Boards. An overlapping hinged door features an acrylic window and security lock.

Size H & W	Cork Board Model#	Letter Board Model#
12" x 18"	EBC1218	EDC1218
18" x 24"	EBC1824	EDC1824
24" x 36"	EBC2436	EDC2436
36" x 30"	EBC3630	EDC3630



Black Letter board Standard see page 32 for optional colors

## Enclosed Radius Design Boards with tempered glass sliding doors

A modern radius design frame provides a large display area and is available with either a tackable bulletin board interior or a changeable letter board.

- 1/4" tempered safety glass doors feature smooth nylon roller tracks
- Attractive showcase security lock
- Concealed mounting brackets
- Color coordinated tackable surface standard with Bulletin Board Model
- Black felt letter panel is standard with Changeable Letter board model. (use Aarco Universal Single Tab Letters on page 37)

### Radius Design Headers:

Matching frame with white opaque panel lettered in black. Standard typeface is Clear Gothic. See page 41 for optional typefaces.



### Bulletin Board Models

Frame	Graphite	Burgundy	Medium Grey
Board	Grey	Burgundy	Grey
Size H & W	Model	Model	Model
36" x 48"	RSB3648BL	RSB3648BU	RSB3648GG
36" x 60"	RSB3660BL	RSB3660BU	RSB3660GG
36" x 72"	RSB3672BL	RSB3672BU	RSB3672GG

### Changeable Letter Board Models

Frame	Graphite	Burgundy	Medium Grey
Board	Black	Black	Black
Size H & W	Model	Model	Model
36" x 48"	RSD3648BU	RSD3648BB	RSD3648GB
36" x 60"	RSD3660BU	RSD3660BB	RSD3660GB
36" x 72"	RSD3672BU	RSD3672BB	RSD3672GB

Size H & W	Burgundy	Graphite	Medium Grey
7 1/2" x 24"	RHD24B	RHD24G	RHD24M
7 1/2" x 48"	RHD48B	RHD48G	RHD48M
7 1/2" x 60"	RHD60B	RHD60G	RHD60M
7 1/2" x 72"	RHD72B	RHD72G	RHD72M

Included is one color heading select typeface from page 41



Indoor model shown with standard natural cork interior. Available in 1, 2 or 3 door models

Standard units have satin anodized finish.

Optional finishes:


\* Additional Cost



Powder Coated Colors



To order powder coat colors add the corresponding letter to model number  
Example: DCC2428R(G) for Green

# Of Doors	Size H & W	Indoor Model	Indoor Illuminated Model 
1	24" x 18"	DCC2418R	DCC2418RI
1	36" x 24"	DCC3624R	DCC3624RI
1	36" x 30"	DCC3630R	DCC3630RI
1	48" x 36"	DCC4836R	DCC4836RI
2	36" x 48"	DCC3648R	DCC3648RI
2	36" x 60"	DCC3660R	DCC3660RI
2	36" x 72"	DCC3672R	DCC3672RI
2	48" x 60"	DCC4860R	DCC4860RI
2	48" x 72"	DCC4872R	DCC4872RI
3	36" x 72"	DCC3672-3R	DCC3672-3RI
3	48" x 72"	DCC4872-3R	DCC4872-3RI
3	48" x 96"	DCC4896-3R	DCC4896-3RI

## Enclosed Bulletin Boards with Aluminum Frame

### Indoor Models

Aarco Products Enclosed Aluminum Bulletin Boards are made of custom extruded parts engineered to provide accurate, durable and handsome cabinets.

All corners are neatly mitred and assembled with heavy duty reinforcements and fasteners. Standard features include: Lockable doors, acrylic safety glass windows, continuous hinges, concealed mounting brackets, natural pebble grain cork background. Tempered glass doors available as an option.

Illuminated models feature U.L. listed fluorescent fixtures, light deflector, bulbs and 3 wire electrical lead.



Add an optional removable letter panel

- Black felt standard  
See page 32 for other colors
- Use Aarco universal single tab letters See page 37

Indoor Removable Letter Panel	Indoor Removable Letter Panel For Illum. Models
RR2418F	RHI2418F
RR3624F	RHI3624F
RR3630F	RHI3630F
RR4836F	RHI4836F
RR3624F	RHI3624F
RR3630F	RHI3630F
RR3636F	RHI3636F
RR4830F	RHI4830F
RR4836F	RHI4836F
RR3624F	RHI3624F
RR4824F	RHI4824F
RR4832F	RHI4832F

Letter panel colors shown on page 32



Available in 1, 2 or 3 door models

## Enclosed Bulletin Boards with Aluminum Frame

### Outdoor Models


Outdoor models feature a vented case for moisture reduction, weatherized rear panel and a thick rubber door seal. A tackable burlap weave vinyl surface is standard.

Standard units have satin anodized finish.

Optional finishes available see page 30.

Illuminated models feature U.L. listed fluorescent fixtures, light deflector, bulbs and 3 wire electrical lead.

Tempered glass doors are available as an option.

# Of Doors	Size H & W	Outdoor Model	Outdoor Illuminated 	Remove Panel	Remove Illum. Panel
1	24" x 18"	ODCC2418R	ODCC2418RI	RR2418V	RHI2418V
1	36" x 24"	ODCC3624R	ODCC3624RI	RR3624V	RHI3624V
1	36" x 30"	ODCC3630R	ODCC3630RI	RR3630V	RHI3630V
1	48" x 36"	ODCC4836R	ODCC4836RI	RR4836V	RHI4836V
2	36" x 48"	ODCC3648R	ODCC3648RI	RR3624V	RHI3624V
2	36" x 60"	ODCC3660R	ODCC3660RI	RR3630V	RHI3630
2	36" x 72"	ODCC3672R	ODCC3672RI	RR3636V	RHI3636V
2	48" x 60"	ODCC4860R	ODCC4860RI	RR4830V	RHI4830V
2	48" x 72"	ODCC4872R	ODCC4872RI	RR4836V	RHI4836V
3	36" x 72"	ODCC3672-3R	ODCC3672-3RI	RR3624V	RHI3624V
3	48" x 72"	ODCC4872-3R	ODCC4872-3RI	RR4824V	RHI4824V
3	48" x 96"	ODCC4896-3R	ODCC4896-3RI	RR4832V	RHI4832V

Add an optional removable letter panel

- Black vinyl standard See page 32 for other colors
- Use Aarco universal single tab letters See page 37



Sliding Glass Doors  
provide maximum  
viewing area



Satin anodized finish standard

## Enclosed Bulletin Boards with Aluminum Frame

### Sliding Glass Doors Models

An anodized aluminum frame, provides a large display area and is available with either a tackable bulletin board interior or a changeable letter board.

- 1/4" tempered safety glass doors feature smooth nylon roller tracks
- Attractive showcase security lock
- Concealed mounting brackets
- Natural cork is standard with Bulletin Board Model
- Black felt letter panel standard with Changeable Letter board model (use Aarco Universal Single Tab Letters on page 37)

H x W Size	Cork Model#	Letter Panel Model#
36" x 48"	SBC3648	SDC3648
36" x 60"	SBC3660	SDC3660
48" x 72"	SBC4872	SDC4872

Optional Powder Coated finishes available see page 30.



## Enclosed Bulletin Boards with Aluminum Frame

### With Personalized Headers

Add your personalized inscription to any of our perfectly manufactured cabinets, thereby complementing all the features. All corners are neatly mitred and assembled with heavy duty reinforcements and fasteners. Standard features include: Lockable doors, acrylic safety glass windows, continuous hinges, concealed mounting brackets, natural pebble grain cork background. Tempered glass doors available as an option.

Illuminated models feature U.L. listed fluorescent fixtures, light deflector, bulbs and 3 wire electrical lead.

Headers are standard in a white opaque acrylic, lettered with durable vinyl cut lettering. Standard typeface is Clear Gothic and lettering is black.

Many optional typefaces and colors are available. See page 41 for more details. Also available are customized logos which are priced according to detail, quality of artwork provided and quantity of units ordered. Please call our sales department for custom quotes.



Satin anodized finish standard (See page 30 for optional colors)

# Of Doors	Size H & W	Indoor Model	Outdoor Model	Indoor Illum.	Outdoor Illum.	Indoor Removable Letter Panel	Outdoor Removable Letter Panel
1	24" x 18"	DCC2418RH	ODCC2418RH	DCC2418RHI	ODCC2418RHI	RHI2418F	RHI2418V
1	36" x 24"	DCC3624RH	ODCC3624RH	DCC3624RHI	ODCC3624RHI	RHI3624F	RHI3624V
1	36" x 30"	DCC3630RH	ODCC3630RH	DCC3630RHI	ODCC3630RHI	RHI3630F	RHI3630V
1	48" x 36"	DCC4836RH	ODCC4836RH	DCC4836RHI	ODCC4836RHI	RHI4836F	RHI4836V
2	36" x 48"	DCC3648RH	ODCC3648RH	DCC3648RHI	ODCC3648RHI	RHI3624F	RHI3624V
2	36" x 60"	DCC3660RH	ODCC3660RH	DCC3660RHI	ODCC3660RHI	RHI3630F	RHI3630V
2	36" x 72"	DCC3672RH	ODCC3672RH	DCC3672RHI	ODCC3672RHI	RHI3636F	RHI3636V
2	48" x 60"	DCC4860RH	ODCC4860RH	DCC4860RHI	ODCC4860RHI	RHI4830F	RHI4830V
2	48" x 72"	DCC4872RH	ODCC4872RH	DCC4872RHI	ODCC4872RHI	RHI4836F	RHI4836V
3	36" x 72"	DCC3672-3RH	ODCC3672-3RH	DCC3672-3RHI	ODCC3672-3RHI	RHI3624F	RHI3624V
3	48" x 72"	DCC4872-3RH	ODCC4872-3RH	DCC4872-3RHI	ODCC4872-3RHI	RHI4824F	RHI4824V
3	48" x 96"	DCC4896-3RH	ODCC4896-3RH	DCC4896-3RHI	ODCC4896-3RHI	RHI4832F	RHI4832V



Optional Removable Letter Panels \*Black standard

## Optional Removable Letter Panels

Available in assorted felt colors for indoor use and vinyl for outdoor use.

### Felt for Indoor Models



### Vinyl for Outdoor Models



Disclaimer: Logo of the United States Postal Service is property of USPS and not for sale to other customers without USPS permission

## Enclosed Changeable Letter Boards with Aluminum Frame

Choose from a wide variety of units all manufactured of custom extruded parts engineered to provide a durable and handsome cabinet.

Fixed rear panels are either felt (indoor) or vinyl (outdoor) and are designed to accommodate changeable letters with tabs spaced on 1/4" centers. (See page 37).

Standard features include: Lockable doors, acrylic safety glass windows, continuous hinges, concealed mounting brackets and a slotted background in felt or vinyl. Tempered glass doors available as an option.

Illuminated models feature U.L. listed fluorescent fixture, light deflector bulbs and 3 wire electric lead.

Outdoor models feature a vented case for moisture reduction, weatherized rear panel and a thick rubber door seal.



Add your personalized inscription to our perfectly manufactured cabinets. Headers are white opaque acrylic with black vinyl letters.

Standard typeface is Clear Gothic. See page 41 for optional typeface and customized services.

Standard units have satin anodized finish. Optional finishes include bronze anodized and powder coated color enhanced frames (See page 30).





## Enclosed Directory Cabinets with Headers

# Of Doors	Size H & W	Indoor Model	Outdoor Model	Indoor Illum. 	Outdoor Illum. 
1	24" x 18"	ADC2418H	OADC2418H	ADC2418HI	OADC2418HI
1	36" x 24"	ADC3624H	OADC3624H	ADC3624HI	OADC3624HI
1	36" x 30"	ADC3630H	OADC3630H	ADC3630HI	OADC3630HI
1	48" x 36"	ADC4836H	OADC4836H	ADC4836HI	OADC4836HI
2	36" x 48"	ADC3648H	OADC3648H	ADC3648HI	OADC3648HI
2	36" x 60"	ADC3660H	OADC3660H	ADC3660HI	OADC3660HI
2	36" x 72"	ADC3672H	OADC3672H	ADC3672HI	OADC3672HI
2	48" x 60"	ADC4860H	OADC4860H	ADC4860HI	OADC4860HI
2	48" x 72"	ADC4872H	OADC4872H	ADC4872HI	OADC4872HI
3	36" x 72"	ADC3672-3H	OADC3672-3H	ADC3672-3HI	OADC3672-3HI
3	48" x 72"	ADC4872-3H	OADC4872-3H	ADC4872-3HI	OADC4872-3HI
3	48" x 96"	ADC4896-3H	OADC4896-3H	ADC4896-3HI	OADC4896-3HI

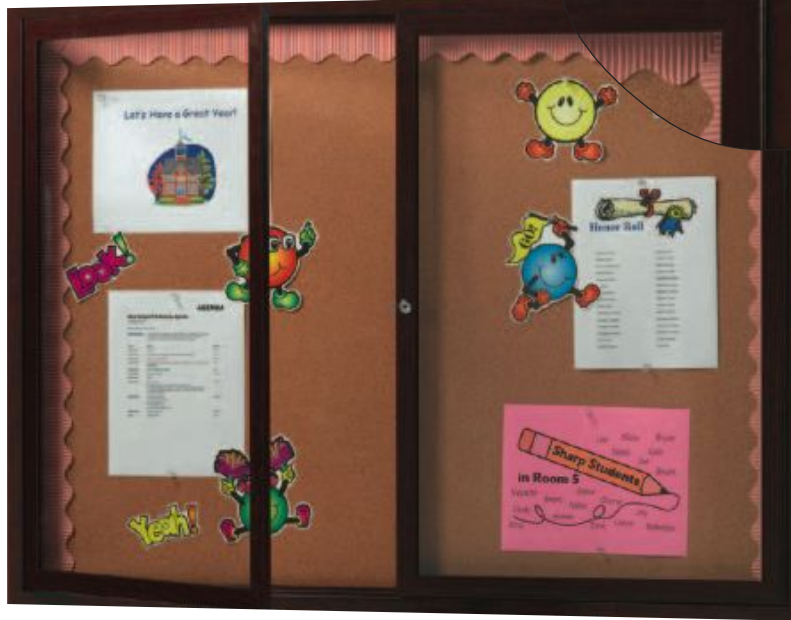
## Enclosed Directory Cabinets



Non-removable letter panels are standard with black felt. Optional colors are available. See page 32 for color selections.

# Of Doors	Size H & W	Indoor Model	Outdoor Model	Indoor Illum. 	Outdoor Illum. 
1	24" x 18"	ADC2418	OADC2418	ADC2418I	OADC2418I
1	36" x 24"	ADC3624	OADC3624	ADC3624I	OADC3624I
1	36" x 30"	ADC3630	OADC3630	ADC3630I	OADC3630I
1	48" x 36"	ADC4836	OADC4836	ADC4836I	OADC4836I
2	36" x 48"	ADC3648	OADC3648	ADC3648I	OADC3648I
2	36" x 60"	ADC3660	OADC3660	ADC3660I	OADC3660I
2	36" x 72"	ADC3672	OADC3672	ADC3672I	OADC3672I
2	48" x 60"	ADC4860	OADC4860	ADC4860I	OADC4860I
2	48" x 72"	ADC4872	OADC4872	ADC4872I	OADC4872I
3	36" x 72"	ADC3672-3	OADC3672-3	ADC3672-3I	OADC3672-3I
3	48" x 72"	ADC4872-3	OADC4872-3	ADC4872-3I	OADC4872-3I
3	48" x 96"	ADC4896-3	OADC4896-3	ADC4896-3I	OADC4896-3I

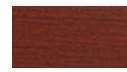
Unique wood grain finish



## Enclosed Bulletin Boards with Aluminum Frame Wood-Look Finish

Wood-Look finish is a unique powder coated process that combines the warm rich appearance of natural hardwood with the rugged and enduring qualities of extruded aluminum. Available in oak, cherry or walnut wood grain finish. Indoor models (shown) feature natural pebble grain cork, outdoor models have a burlap weave vinyl tackable surface.

### Wood-Look Finishes



Cherry



Oak



Walnut

### Enclosed Aluminum Bulletin Boards

# Of Doors	Size H & W	Indoor Oak Model	Indoor Cherry Model	Indoor Walnut Model	Outdoor Oak Model	Outdoor Cherry Model	Outdoor Walnut Model
1	24" x 18"	DCCO2418R	DCCW2418R	DCCWW2418R	ODCCO2418R	ODCCW2418R	ODCCWW2418R
1	36" x 24"	DCCO3624R	DCCW3624R	DCCWW3624R	ODCCO3624R	ODCCW3624R	ODCCWW3624R
1	36" x 30"	DCCO3630R	DCCW3630R	DCCWW3630R	ODCCO3630R	ODCCW3630R	ODCCWW3630R
1	48" x 36"	DCCO4836R	DCCW4836R	DCCWW4836R	ODCCO4836R	ODCCW4836R	ODCCWW4836R
2	36" x 48"	DCCO3648R	DCCW3648R	DCCWW3648R	ODCCO3648R	ODCCW3648R	ODCCWW3648R
2	36" x 60"	DCCO3660R	DCCW3660R	DCCWW3660R	ODCCO3660R	ODCCW3660R	ODCCWW3660R

## Enclosed Directory Boards with Aluminum Frame Wood-Look Finish

Wood-Look finish is a unique powder coated process that combines the warm rich appearance of natural hardwood with the rugged and enduring qualities of extruded aluminum. Available in oak, cherry or walnut wood grain finish.

Fixed rear panels are either felt (indoor) or vinyl (outdoor) and are designed to accommodate changeable letters with tabs spaced on 1/4" centers. (See page 37). Black panels are standard see page 32 for other colors.



### Enclosed Aluminum Directory Cabinets

# Of Doors	Size H & W	Indoor Oak Model	Indoor Cherry Model	Indoor Walnut Model	Outdoor Oak Model	Outdoor Cherry Model	Outdoor Walnut Model
1	24" x 18"	ADCO2418R	ADCW2418R	ADCWW2418R	OADCO2418R	OADCW2418R	OADCWW2418R
1	36" x 24"	ADCO3624R	ADCW3624R	ADCWW3624R	OADCO3624R	OADCW3624R	OADCWW3624R
1	36" x 30"	ADCO3630R	ADCW3630R	ADCWW3630R	OADCO3630R	OADCW3630R	OADCWW3630R
1	48" x 36"	ADCO4836R	ADCW4836R	ADCWW4836R	OADCO4836R	OADCW4836R	OADCWW4836R
2	36" x 48"	ADCO3648R	ADCW3648R	ADCWW3648R	OADCO3648R	OADCW3648R	OADCWW3648R
2	36" x 60"	ADCO3660R	ADCW3660R	ADCWW3660R	OADCO3660R	OADCW3660R	OADCWW3660R





Silver



Antique Brass

Available in 1, 2 or 3 door models



Gold

**New!**

## Enclosed Bulletin and Directory Boards with Waterfall Style Frame



Elegant bullnose frame

Our new Waterfall Series provides a contemporary design that will enhance any décor. The extruded aluminum frame ensures durability and is available in three attractive finishes. All models come with lockable doors that use full length hinges and clear acrylic safety glass. Tempered glass doors available as an option. Concealed mounting brackets ensure a neat appearance.

### Enclosed Bulletin Board with Waterfall Style Frames

These units feature a tackable natural grain cork background. Other backgrounds are available. Please call for details.

# Of doors	Size H & W	Silver Model	Antique Brass Model	Gold Model
1	24" X 18"	WFC2418	WFC2418LB	WFC2418G
1	36" X 24"	WFC3624	WFC3624LB	WFC3624G
1	36" X 30"	WFC3630	WFC3630LB	WFC3630G
2	36" X 48"	WFC3648	WFC3648LB	WFC3648G
2	36" X 60"	WFC3660	WFC3660LB	WFC3660G
3	48" X 72"	WFC4872	WFC4872LB	WFC4872G

### Enclosed Directory Boards with Waterfall Style Frames

Enclosed changeable letter boards feature a black felt letter panels. Other colors are available. Please call for details. Use Aarco Universal Single Tab letters found on page 37.

# Of doors	Size H & W	Silver Model	Antique Brass Model	Gold Model
1	24" X 18"	WFD2418	WFD2418LB	WFD2418G
1	36" X 24"	WFD3624	WFD3624LB	WFD3624G
1	36" X 30"	WFD3630	WFD3630LB	WFD3630G
2	36" X 48"	WFD3648	WFD3648LB	WFD3648G
2	36" X 60"	WFD3660	WFD3660LB	WFD3660G
3	48" X 72"	WFD4872	WFD4872LB	WFD4872G



## Enclosed Bulletin Boards with Sleek Radius Design

For a contemporary interior, choose our "Radius Design" Enclosed Bulletin Boards. Frames are fashioned of extruded aluminum with an attractive and long lasting powder coated finish: Graphite, Burgundy and Medium Grey.

Standard features include: Acrylic safety glass windows, continuous hinges, concealed mounting brackets and locking doors. Tempered glass doors available as an option.



Shown with medium Grey finish

Size H & W	Graphite Frame Model	Burgundy Frame Model	Medium Grey Frame Model
36" x 24"	RAB3624BL	RAB3624BU	RAB3624GG
36" x 48"	RAB3648BL	RAB3648BU	RAB3648GG
36" x 60"	RAB3660BL	RAB3660BU	RAB3660GG
36" x 72"	RAB3672BL	RAB3672BU	RAB3672GG



Shown with graphite finish

**Matching Radius Design Headers:** Matching frame with white opaque panel lettered in black. Standard typeface is Clear Gothic. See page 41 for optional typefaces.

Size H & W	Burgundy	Graphite	Medium Grey
7 1/2" x 24"	RHD24B	RHD24G	RHD24M
7 1/2" x 48"	RHD48B	RHD48G	RHD48M
7 1/2" x 60"	RHD60B	RHD60G	RHD60M
7 1/2" x 72"	RHD72B	RHD72G	RHD72M

Included is one color heading select typeface from page 41.

## Enclosed Directory Boards with Sleek Radius Design

The same modern radius design frame is also available with a black felt changeable letter board. Use together with our "Universal Single Tab Changeable Letter" shown on page 37 to create a dynamic message center. Standard letter board is Black. See page 32 for optional colors.

Size H & W	Graphite Frame Model	Burgundy Frame Model	Medium Grey Frame Model
36" x 24"	RAD3624BU	RAD3624BB	RAD3624GB
36" x 48"	RAD3648BU	RAD3648BB	RAD3648GB
36" x 60"	RAD3660BU	RAD3660BB	RAD3660GB
36" x 72"	RAD3672BU	RAD3672BB	RAD3672GB



Shown with medium grey finish

A classic felt covered board that is precision grooved on 1/4" centers to accept our universal quick change letters featured below. Create your own sign in minutes and change it at will to suit your current needs. Standard boards feature a black felt letter panel in vertical or horizontal landscape. See page 32 for optional colors.

## Framed Letter Board Message Centers

All units complete with 1 Free set of 3/4" Helvetica letters and assortment tray

Size H & W	Aluminum Model	Wood Model	Size H & W	Aluminum Model	Wood Model
12" x 18"	BOFD1218	AOFD1218	18" x 12"	BOFD1812	AOFD1812
18" x 24"	BOFD1824	AOFD1824	24" x 18"	BOFD2418	AOFD2418
24" x 30"	BOFD2430	AOFD2430	30" x 24"	BOFD3024	AOFD3024
24" x 36"	BOFD2436	AOFD2436	36" x 24"	BOFD3624	AOFD3624
30" x 36"	BOFD3036	AOFD3036	36" x 30"	BOFD3630	AOFD3630
36" x 48"	BOFD3648	AOFD3648	48" x 36"	BOFD4836	AOFD4836
36" x 60"	BOFD3660	AOFD3660	60" x 36"	BOFD6036	AOFD6036
48" x 72"	BOFD4872	AOFD4872	72" x 48"	BOFD7248	AOFD7248
48" x 96"	BOFD4896	AOFD4896	96" x 48"	BOFD9648	AOFD9648



Aluminum Frame



Oak Frame

## Single Pedestal Letter Board



Adjustable height pedestal boards:

- Perfect for pedestrian areas
- Black felt background provides excellent contrast
- Adjust from 36" to 66" tall
- SMD open face
- EMD features slideoff acrylic cover
- Base and post are Black
- Frame is satin anodized aluminum
- Includes 1 Free set of 3/4" Helvetica letters

CMD Single Pedestal Letterboard  
with acrylic lift-off cover

Model #	Size	Description
SMD1218	12" h x 18" w	Open Face
SMD1418	14" h x 18" w	Open Face
CMD1418	14" h x 18" w	With Lift Off Cover



## Free Standing Letter Boards Cabinet

Large message board utilizes a sturdy double pedestal stand with reinforced feet extending front and rear. Features a lockable door frame with a shatter resistant acrylic window and 2 Keys. Satin anodized frame is matched perfectly to the detachable uprights for easy shipping and assembly. Overall height is 72".

Frame

Size	Model #	Description
36" x 24"	FMD3624	Lockable Door
36" x 30"	FMD3630	Lockable Door



## Universal Single Tab Changeable Letters

Injection molded white letter and number fonts with single tabs to fit any grooved letter board. All sets include assortment tray with identification symbols for easy use.

### Gothic Style Typeface ABC

Model#	Characters/Set	Size
GF.75	165	3/4"
GF1.0	165	1"

### Gothic Double Sets

Model#	Characters/Set	Size
GFD.75	330	3/4"
GFD1.0	330	1"

### Helvetica Typeface ABC

Model#	Characters/Set	Size
HF.50	165	1/2"
HF.75	165	3/4"
HF1.0	165	1"
HF1.5	138	1 1/2"
HF2.0	160	2"

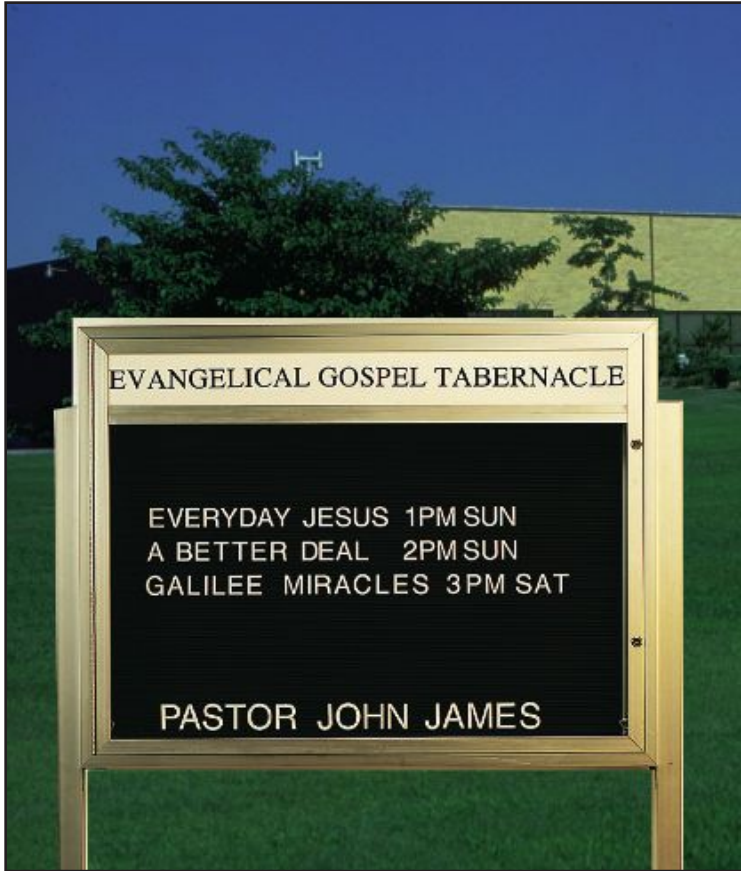
### Helvetica Double Sets

Model#	Characters/Set	Size
HFD.50	330	1/2"
HFD.75	330	3/4"
HFD1.0	330	1"
HFD1.5	276	1 1/2"
HFD2.0	320	2"



Universal Single Tab  
Changeable Letters Fits  
Any Board





## Community Boards

Aarco Product's Community Boards are Ideal for religious, educational and community buildings of all types. Available in Single or Double sided model.

Post schedules, announcements and messages that are clearly read and visible at night as well as during daytime hours.

Standard features include:

- Satin anodized finish.
- Solid extruded aluminum construction
- Removable vinyl letter panel for easy letter changes
- Full length aluminum (non-rust) hinge
- Two sturdy cam locks
- Single sided unit comes with 300 pieces 1 1/2" and 300 pieces 2" helvetica characters per side
- Double sided unit comes with 600 pieces 1 1/2" and 600 pieces 2" helvetica characters per side
- Vented for heat and moisture reduction
- Acrylic windows
- One color header with standard Clear Gothic typeface included, optional colors and graphics available. See page 41.
- Top illuminated features UL listed fluorescent light fixture, bulb and a 6', 3 wire lead

Optional features:

- Bronze anodized (BA)
- Powder coated color enhanced frames

( ) indicate color using prefix on page 39

Removable panel permits letter changing indoors.



### Single Sided: 4" deep



Size H X W	Model Number	Ctn. Wt. Lbs.	Finish
33" x 43"	BM3343	95	Satin Anodized
36" x 47"	BM3647	110	Satin Anodized
42" x 60"	BM4260	130	Satin Anodized
33" x 43"	BM3343B	95	Bronze Anodized
36" x 47"	BM3647B	110	Bronze Anodized
42" x 60"	BM4260B	130	Bronze Anodized

### Double Sided: 6" deep



Size H X W	Model Number	Ctn. Wt. Lbs.	Finish
33" x 43"	DBM3343	175	Satin Anodized
36" x 47"	DBM3647	215	Satin Anodized
42" x 60"	DBM4260	250	Satin Anodized
33" x 43"	DBM3343B	175	Bronze Anodized
36" x 47"	DBM3647B	215	Bronze Anodized
42" x 60"	DBM4260B	250	Bronze Anodized

### Lawn Posts:

Recommended for single sided units

2" x 2" x 96"	BM2 x 2	30	Satin Anodized
2" x 2" x 96"	BM2 x 2B	30	Bronze Anodized

Recommended for single sided units

2" x 4" x 96"	BM2 x 4	55	Satin Anodized
2" x 4" x 96"	BM2 x 4B	55	Bronze Anodized

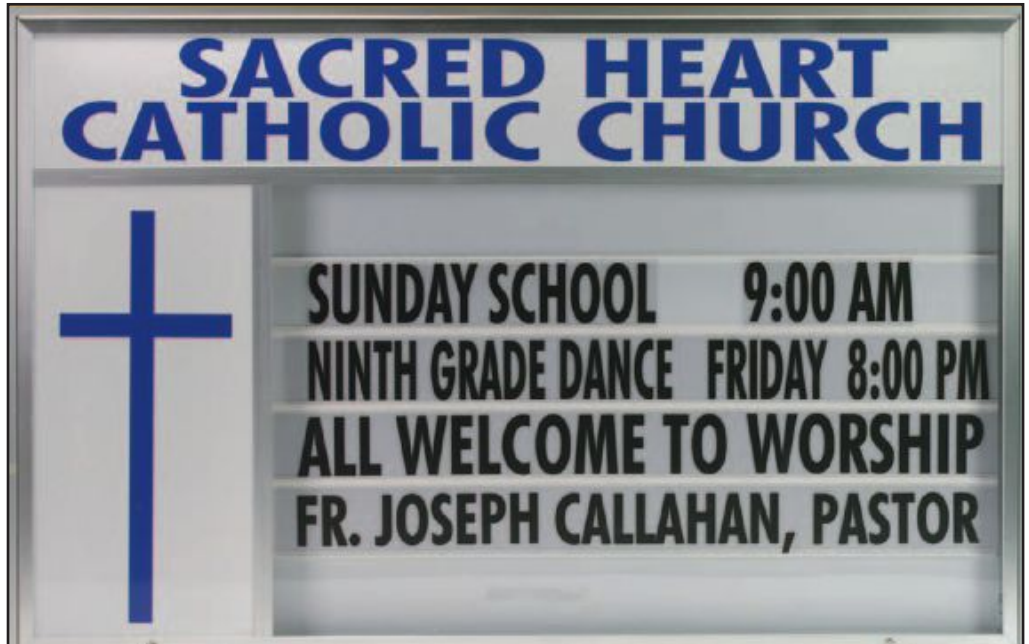


Sun Sensor automatic On/Off switch  
Model # ALS-18

MBS Series features Symbol Case and Header

# Marquee Changeable Sign System

Symbol case dimensions  
15" wide by 35" high

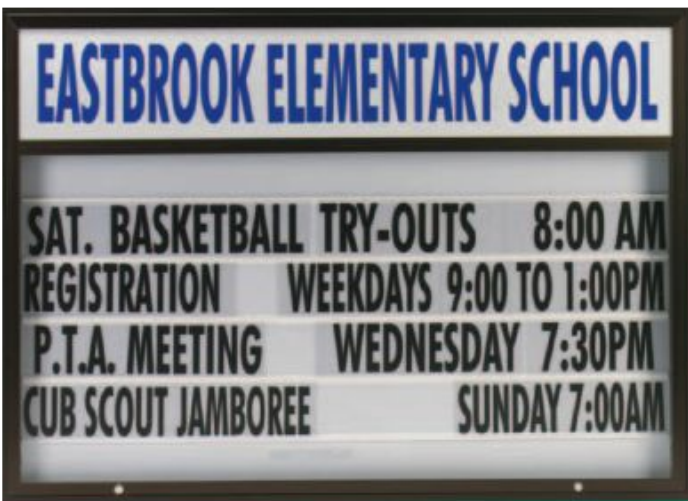


## "Marq One" Single Sided

The "Marq ONE" single sided outdoor changeable sign is great to display periodic messages for schools, fire houses, churches and commercial buildings..

The "Marq ONE" is designed for easy wall hanging and can be mounted to our optional lawn posts.

### MBM Series features Header only



Marq ONE features include:

- Top hinged doors for easy access
- Heavy duty door stays
- Removable acrylic letter board 5 line
- Includes 500 polycarbonate characters
- One color header with standard Clear Gothic typeface included, optional colors and graphics available. See page 41.
- Locking doors
- Vented for heat and moisture reduction
- Satin or bronze anodized
- Powder coated color enhanced frames (optional see below).
- Giant 11" header
- Top illuminated features UL listed fluorescent light fixtures bulb and a 6', 3 wire lead

### Single Sided: 4" deep

#### MBS Series features Symbol Case and Header

Size H X W	Model Number	Ctn. Wt. Lbs.	Finish
50" x 84"	MBS5084	175	Satin Anodized
50" x 84"	MBS5084B	175	Bronze Anodized

#### MBM Series features Header only

50" x 70"	MBM5070	125	Satin Anodized
50" x 70"	MBM5070B	125	Bronze Anodized

#### Lawn Posts:

2" x 2" x 96"	BM2 x 2	30	Satin Anodized
2" x 2" x 96"	BM2 x 2 B	60	Bronze Anodized

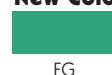


Sun Sensor automatic On/Off switch  
Model # ALS-18

Powder Coated:  
Color Enhanced Frames



#### New Colors



To order add letter to model number Example: MBS5084 (G) for Green



## Marquee Changeable Sign System

### "Marq Two" Double Sided

The "Marq Two" outdoor changeable sign is great for schools, fire houses, churches, municipal buildings, government buildings and any type of commercial establishment. Install easily on your existing structures or on our heavy duty lawn posts.

Marq Two features include:

- Double sided design
- Top hinged doors for easy access to both sides
- Heavy duty door stays (see figure 1)
- Removable translucent 5 line letter board
- Rear illuminated
- 1000 polycarbonate characters
- Customized headers included. See page 41
- Locking doors
- Vented for heat and moisture reduction
- Satin or bronze anodized
- Powder coated color enhanced frames (optional see below).
- Giant 11" header
- Rear illuminated units features UL listed fluorescent light fixtures, 6 bulbs and a 6', 3 wire lead

### Lawn Posts

- 2" x 4" heavy gauge tubing
- Tempered steel threaded insert



Figure 1

### Double Sided: 8" deep DMBS Series features Symbol Case and Header

Size H X W	Model Number	Ctn. Wt. Lbs.	Finish
52" x 86"	DMBS5286	285	Satin Anodized
52" x 86"	DMBS5286B	285	Bronze Anodized


### DMBM Series features Header only

52" x 72"	DMBM5272	250	Satin Anodized
52" x 72"	DMBM5272B	250	Bronze Anodized

### Lawn Posts:

2" x 4" x 96"	BM2 x 4	55	Satin Anodized
2" x 4" x 96"	BM2 x 4B	125	Bronze Anodized

See page 41 for header type selection, standard typeface is Clear Gothic.

 **Sun Sensor** automatic On/Off switch  
Model # ALS-18

Powder Coated:  
Color Enhanced Frames



New Colors  
 FG  
Forest Green

EB  
Earth Brown



## Letters and Graphics



### Marquee Changeable Letters

Highly visible 5" letters are precision silk screened on .020 clear polycarbonate sheet. Each set includes an assortment of 500 individually packed symbols. Polycarbonate will not melt or distort as a result of direct sunlight or high interior temperatures.

Model# F5.0 5" Letters



### Typeface styles for headers

Vinyl cut lettering is computer generated to produce sharp, distinct characters in many shapes, sizes and colors.

Our art department will custom create logos and other designs to personalize the message that best suit your needs.

Multiple color messages and custom design are also available at additional costs.

Standard symbols that are available at no additional charge:

#### FIRST BAPTIST CHURCH

Clear Gothic Typeface

(standard font used unless other font is specified)

#### St. Christopher's Chapel

Old English Typeface

#### THE SALVATION ARMY

Chocolate Typeface

#### JOHN ADAMS ELEMENTARY SCHOOL

Futura Bold Condensed Typeface

#### Community Youth Center

Romana Bold Typeface

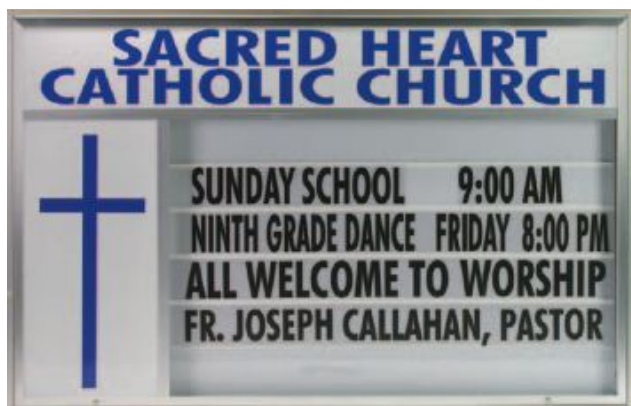
#### Standard Symbols



#### ROCK BROOK SCHOOL

University - Roman Bold Typeface

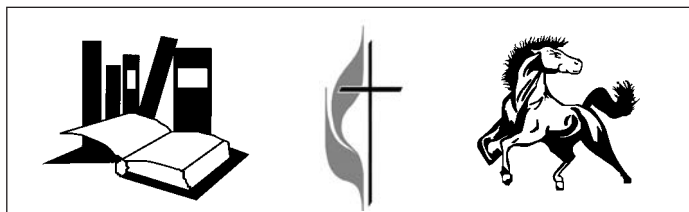
### Art work available for Symbol Case



#### Standard Symbols



#### Custom Symbols





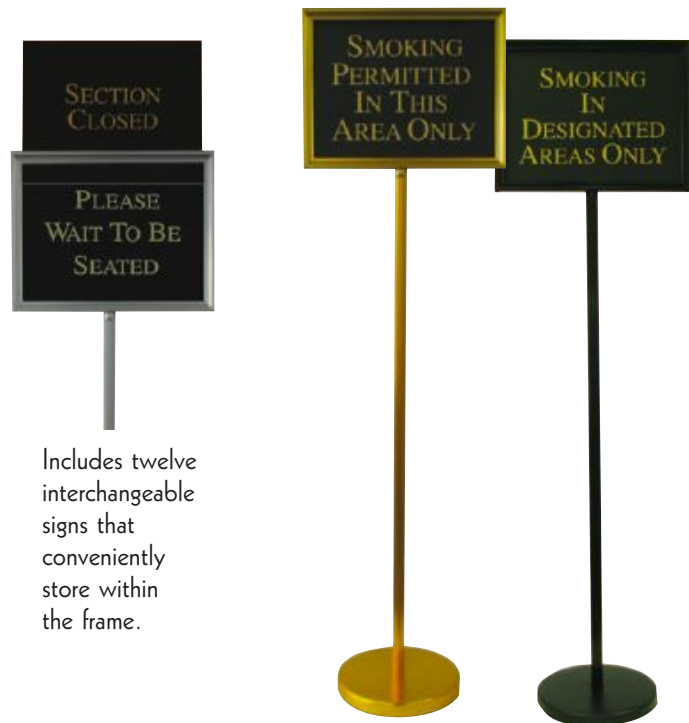
**New!**

## The Director

This sturdy and attractive sign is constructed with a single piece extruded aluminum post and weighted base with rubberized floor guards. Choose from either 54" overall height or 59" overall height. All have a 12" h x 15" w. sign frame and includes 12 signs that conveniently store inside. Available in Silver, Gold or Black.

Finish	Size	Model#
Gold	54"	TY-2B
Silver	54"	TY-2CH
Black	54"	TY-2BK
Gold	59"	TI-IB
Silver	59"	TI-ICH
Black	59"	TI-IBK

**Don't Leave Your Customers Guessing!**  
Great for restaurants or any retail or public environment



Includes twelve interchangeable signs that conveniently store within the frame.



## Changeable Poster Sign

Included 12 signs (grey with white letters) with the messages seen above that are conveniently stored inside frame.  
Overall Height 54", Frame 12" h x 15" w., Features rubberized floor guards

Model# PFS1114



## Display Style Markerboards and Chalkboards

Use to create signs, menu boards or other announcements. Available with white markerboard, neon markerboard or black chalkboard. All come with a solid red oak frame with a high gloss finish and are equipped with mounting hangers.

\*Use Arco's neon markers with the neon markerboard to achieve a colorful sign that is seemingly illuminated.



(Artwork shown for illustration purpose only and not included on board)

### Neon Markerboard\*

Size H&W	Model#
12" x 18"	BOC1218NT
18" x 24"	BOC1824NT
24" x 36"	BOC2436NT
36" x 48"	BOC3648NT
36" x 60"	BOC3660NT

Other sizes available call for details



(Artwork shown for illustration purpose only and not included on board)

### White Markerboard

Size H&W	Model#
12" x 18"	WOC1218NT
18" x 24"	WOC1824NT
24" x 36"	WOC2436NT
36" x 48"	WOC3648NT
36" x 60"	WOC3660NT

Other sizes available call for details



(Artwork shown for illustration purpose only and not included on board)

### Black Chalkboard

Size H&W	Model#
12" x 18"	OC1218NT
18" x 24"	OC1824NT
24" x 36"	OC2436NT
36" x 48"	OC3648NT
36" x 60"	OC3660NT

Other sizes available call for details



See page 45  
for Markers,  
Chalk and  
Accessories

## Aluminum Telescopic Display Easel

- Lightweight
- Easy to use
- 66" when fully extended
- 35" when retracted for table top use
- Display posters
- Display boards up to 36" x 48"

Model# AE66

### Optional T-Clamp

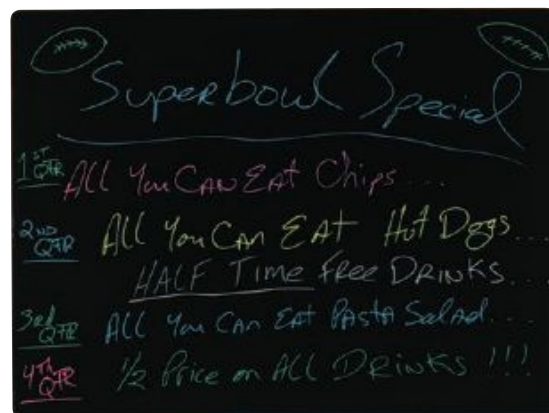
Spring loaded "T-Clamp" attaches to our special mounting platform located on the top of our AE66 Easel (See figure 1). Holds pads up to 50 sheets or just one page.



T-1 Clamp



Figure 1



## Radius Design Neon Markerboard

For casual look choose over Radius Design Neon Markerboard. soft black vinyl trim is carefully fashioned to the curved edges of the melamine surface. Pre attached hangers included.

Size H&W	Model#
11" x 14"	RB1114
18" x 24"	RB1824
24" x 36"	RB2436
36" x 48"	RB3648



# A-Frame Sidewalk Boards

A-Frame Sidewalk Boards make great Menu Boards or POP signs that broadcast messages effectively. Great for restaurants, pubs, markets and retail stores.

Features include: steel reinforced corners, weather resistant hardware, unique plastic camel foot floor leveling system and full width aluminum hinges.

Choose from traditional solid oak wood frame with either clear lacquer or cherry finish or modern aluminum frame with either clear anodized or black powder coated finish.

Choose From:

- 4 Writing surfaces
  - White Markerboards
  - Black Markerboard\*
  - Black Acrylic\*
  - Black Chalkboard
- 2 Sizes: full width 42" H x 24" W or narrow width 42" H x 18" W (Great for tight spots and narrow sidewalks)

\* Use Aarco Neon Markers to produce a seemingly illuminated colorful sign (see page 5).



See page 45 for Markers, Chalk and Accessories



Quality Camel Foot Leveler

**Creat your own custom sign!** (Artwork shown for illustration purpose only and not included on board)



Anodized Aluminum Frame



Solid Oak Wood Frame with Cherry lacquer finish



Black Powder Coated Aluminum Frame



Solid Oak Wood Frame with clear lacquer finish

Frame	Black Chalkboard	White Markerboard
<b>Size 42" H x 24" W</b>		
Oak	A-1	A-5
Cherry	MA-1	MA-5
Aluminum	AA-1	AA-5
Black Aluminum	BA-1	BA-5

Frame	Black Chalkboard	White Markerboard
<b>Size 42" H x 18" W</b>		
Oak	A-3	A-35
Cherry	MA-3	MA-35
Aluminum	AA-3	AA-35
Black Aluminum	BA-3	BA-35

Frame	Black Markerboard	Black Acrylic
<b>Size 42" H x 24" W</b>		
Oak	A-11	A-1P
Cherry	MA-11	MA-1P
Aluminum	AA-11	AA-1BP
Black Aluminum	BA-11	BA-1BP

Frame	Black Markerboard	Black Acrylic
<b>Size 42" H x 18" W</b>		
Oak	A-311	A-3P
Cherry	MA-311	MA-3P
Aluminum	AA-311	AA-3BP
Black Aluminum	BA-311	BA-3BP

## Tabletop A-Frame

Table Top A-frame Boards are a great in store marketing tool which can be used to communicate messages up close to your customers. They can be conveniently used in any number of places including, displays and tables. They are constructed with solid oak frames finished with an attractive clear lacquer that will blend with almost any décor. Available with a selection of re-writable surfaces designed to suite your style. They work great in restaurants, bakeries, supermarkets specialty stores or just about any retail environment

Choose from black chalkboard, black markerboard, black acrylic (great for neon markers) or traditional long last white markerboard.

Size	
H&W	Model#
12" x 14"	TA-1 Black Chalkboard
12" x 14"	TA-11 Black Markerboard
12" x 14"	TA-1P Black Acrylic
12" x 14"	TA-5 White Markerboard

**Aarco Dry Erase Markers** include a set of 4 reduced odor markers (red, blue, green, and black).

**Model# PK**

M-4 4

**Model# Size**

E1 2" x 5" x 1"

E2 1 1/2" x 4" x 1v



Aarco Chalk include a set of 12 pieces, White Chalk and Colored Chalk

Model#	Style	Box
WCS-12	White Chalk	12
WCS-144	White Chalk	144 (1 Case)
CCS-12	Colored Chalk	12
CCS-144	Colored Chalk	144 (1 Case)



(Artwork shown for illustration purpose only and not included on board)

## Neon Markers

Aarco Products' Neon Markers include a set of 6 vivid colors. Our unique bullet shaped pump style tip resists premature drying of the marker ink.

MFL-6



Unique wood grain finish

## A-Frame Sidewalk Boards

**Featuring:**

**Wood-Look powder coated finished Aluminum frame**

Combine the rich warm look of natural wood with the slimmer rugged qualities of extruded aluminum. Now available in cherry style with black chalkboard or a black acrylic markerboard.

Frame	Black Chalkboard	Black Acrylic
42" H x 24" W		
Cherry Wood-Look	1-WA-1B	1-WA-1BP



## POP Advertising Specialty Boards

Choose either North American red oak or aluminum in bronze or silver anodized.

These units provide for five 8 1/2" x 11" advertising slots on each side for pictures or advertisements of any kind. The center panels feature a variety of styles including changeable letter panels, cork panels or customized graphics. You can even add a removable dry erase calendar.

Great for health clubs, grocery stores or any community gathering place. Units are available in custom sizes and weatherized for outdoor use.

Optional features include UV glass to protect valuable material from sun light. Size shown is 52" x 72" with an optional crown molding.

Big Y logo is a trade mark and not for sale without permission.



## Custom Boards

Aarco Products specializes in custom boards designed and tailor to fit your exact need and specifications. Custom sizes, colors, graphics, grids and frame styles are just a few of the many options that are available.

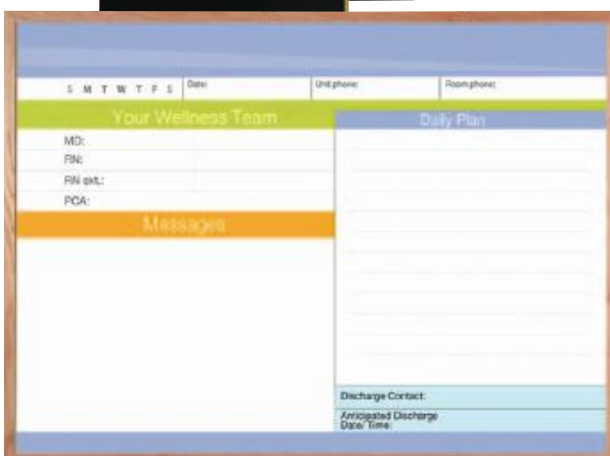
Speak to your sales representative or call 1-800-246-6038 to discuss to meet your specific needs.



Vinyl cut letters



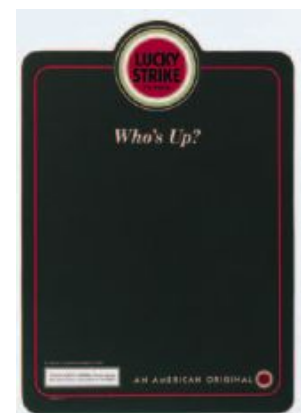
Vinyl cut letters and graphics on outdoor A-Frame.



Hospital Records Board



3 color Silk-Screen



3 Color Silk-Screen



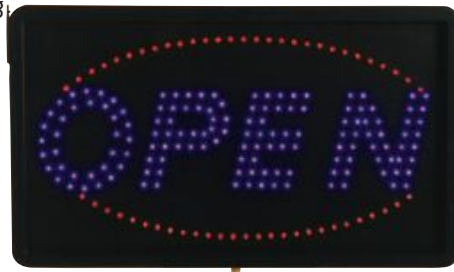
## Aarco Products High Visibility LED Signs let you stand out in the crowd and sell.

All models offer three display modes including "steady on", flashing and crawling.

- Super Bright
- Long Lasting
- Install Easily
- Energy Efficient
- Economical



Model# Size  
OPE02S H&W 6 3/4" x 16 1/8"



Model# Size  
OPE02L H&W 13" x 22"



Model# Size  
PIZ01L H&W 13" x 22"



Model# Size  
SAL05S H&W 6 3/4" x 16 1/8"



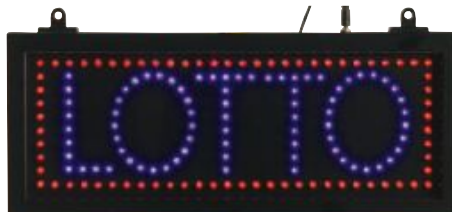
Model# Size  
SAL05L H&W 13" x 22"



Model# Size  
COF03L H&W 13" x 22"



Model# Size  
PIZ01S H&W 6 3/4" x 16 1/8"



Model# Size  
LOT04S H&W 6 3/4" x 16 1/8"



Model# Size  
BEE06S H&W 6 3/4" x 16 1/8"



### Aarco Products High Visibility LED Signs In Spanish.



Model# Size  
CER07S H&W 6 3/4" x 16 1/8"



Model# Size  
ABI08S H&W 6 3/4" x 16 1/8"



Model# Size  
ABI08L H&W 13" x 22"



Deluxe P17 and P7 Series features dual function capability. Create your own sign using the neon markerboard or insert a printed poster or menu.

## Broadcaster

### Free Standing Display and Menu Holders

#### Double Pedestal Broadcaster P-15 And P-17

The Double Pedestal Broadcaster is light weight and easy to transport. Display Menus, Posters and Art work or choose the Neon Markerboard unit to create your own menu or sign.

**Features Include:** Overall Size 48"H x 25"W, Frame Size ID 30"H x 22"W, Chrome, Brass and Black finish, Round Weighted Base, Universal Horizontal and Vertical Design, Acrylic Window, Removable Cover. Assembles easily.



#### Dual Capability Neon Markerboard and Menu / Poster Holder

Model #	Style
P-17C	Chrome
P-17B	Brass
P-17BK	Black

Markers included with Neon Markerboards

#### Neon Markers

Aarco Products' Neon Markers include a set of 6 vivid colors. Our unique bullet shaped pump style tip resists premature drying of the marker ink.

MFL-6



#### Single Pedestal Broadcaster P-5 and P-7

The Single Pedestal Broadcaster is sleek and requires little space. Display Menus, Posters, and Artwork or choose our Neon Markerboard unit to create your own menu or sign.

**Features Include:** Frame Dimension 20"x 24", Inside Dimension 17 1/2" x 22 1/2", Chrome, Brass and Black finish, Round Weighted Base, Universal Horizontal and Vertical Design, Acrylic Window, Removable Cover. Assembles easily.

#### Dual Capability Neon Markerboard and Menu / Poster Holder

Model #	Style
P-7C	Chrome
P-7B	Brass
P-7BK	Black

Markers included with Neon Markerboards

#### Menu and Poster Holder

Model #	Style
P-15C	Chrome
P-15B	Brass
P-15BK	Black

Markers not included



#### Menu and Poster Holder

Model #	Style
P-5C	Chrome
P-5B	Brass
P-5BK	Black

Markers not included

## Single Pedestal - Ornamental Sign and Poster Stand

Available in polished Brass or Chrome. Ideal for Hotels, Restaurants and other distinctive environments. Heavy duty welded construction adds stability in busy locations. Rear panel is removable without tools for easy unloading and replacement of Signs, Posters and Menus. Complete with an acrylic cover.

Model #      Style

P31-C      Chrome

P31-B      Brass

Frame size ID 26 1/2" H x 18 1/2" W

Overall size 49" H x 23" W



## "The Maitre D"

This beautiful heavy duty Hostess Station will welcome your customers with class. Use for seating arrangements, reservations and menu display. Subtle lighting illuminates display area in dark environments.

Model #      Style

MD-1      Brass

MD-2      Chrome



## Podium

**New!**

Crafted to perfection with all hardwood design and classic cherry finish suitable for use in all high end environments.

Size: 29 1/8" L x 21 5/8" W x 47 1/4" H

Model #      Style

POD-1      Cherry



**New!**

### Chrome Folding Luggage Stands

Sturdy chrome plated steel construction that provides a clean look and long lasting performance.

Model #      Style  
CLS      Chrome



**New!**

### Chrome Folding Tray Stands

Sturdy chrome plated steel construction that provides a clean look and long lasting performance.

Model #      Style  
CTS      Chrome



## Wood Tray Stands

Made of sturdy hardwood with a semi gloss lacquer finish. In light, medium or dark stain. Legs pivot on steel bushings for smooth and easy folding and for long lasting use.

Model #      Style  
TS-1      Light  
TS-2      Medium  
TS-3      Dark





**New!**

## Attractive Cigarette Receptacles

Available in floor standing or wall mounted models



Satin



Matte Black



Gold

Other colors available on special order, please call for more information.

### Floor Standing Model

Floor standing Cigarette / Ash receptacles are designed to blend with your modern decor while assisting your daily maintenance requirements. This high quality all aluminum design is completely waterproof and is finished to endure extreme outdoor conditions. A heavy weight 30 lb base stabilizes the unit even on windy days. The floor standing units feature a removable cap and post for easy disposal of ashes and butts.

#### Floor Standing Model

Model #	Style
SS40F	Satin
SC40F	Gold
SB40F	Black



Emptying is quick and easy!

### Wall Mounted Model

Wall mounted Cigarette / Ash receptacles are designed to blend with your modern decor while assisting your daily maintenance requirements. This high quality all aluminum design is completely waterproof and is finished to endure extreme outdoor conditions. The wall mounted unit features an easy to remove canister and removable cap for fast disposal of debris. Choose from three popular finishes to best suit your decor. Other colors available on special order, please call for more information.



Satin



Matte Black



Gold

#### Wall Mount Model

Model #	Style
SS15W	Satin
SC15W	Gold
SB15W	Black

## Heavy Duty, Top Quality Bellman's Handtrucks and Luggage Carts



**Model# Finish**

LC-1B Brass

LC-1C Chrome

Size: 42" L x 24" W x 72" H  
Constructed with 1 1/2" Tube  
6" Solid Wheels  
Red Carpet Bed & Bumper Guards

**Model# Finish**

BEL-101B Brass

BEL-101C Chrome

Size: 47 1/4" L x 25 1/2" W x 73" H  
Constructed with 2" Tube  
6" Wheels  
Red Carpet Bed & Bumper Guards

**Model# Finish**

LC-2B Brass

LC-2C Chrome

Size: 42" L x 24" W x 72" H  
Constructed with 1 1/2" Tube  
6" Solid Wheels  
Red Carpet Bed & Bumper Guards



HT-1B

HT-2B

**Model# Finish**

HT-1B Brass

Size: 15" L x 15" W x 48" H  
Constructed with 1" Tube  
8" Pneumatic Wheels

**Model# Finish**

HT-2B Brass

Size: 19 1/2" L x 15" W x 48" H  
Constructed with 1" Tube  
8" Pneumatic Wheels



**Model# Finish**

SB-1C Chrome

Size: 36" L x 24" W x 36" H  
Constructed with 1 1/2" Tube  
6" Solid Wheels

All one piece construction for durable  
long lasting quality.



**Model# Finish**

FB-1B Brass

FB-1C Chrome

Size: 42" L x 24" W x 36" H  
Constructed with 1 1/2" Tube,  
6" Solid Wheels  
Red Carpet Bed & Bumper Guards

# Form-A-Line System

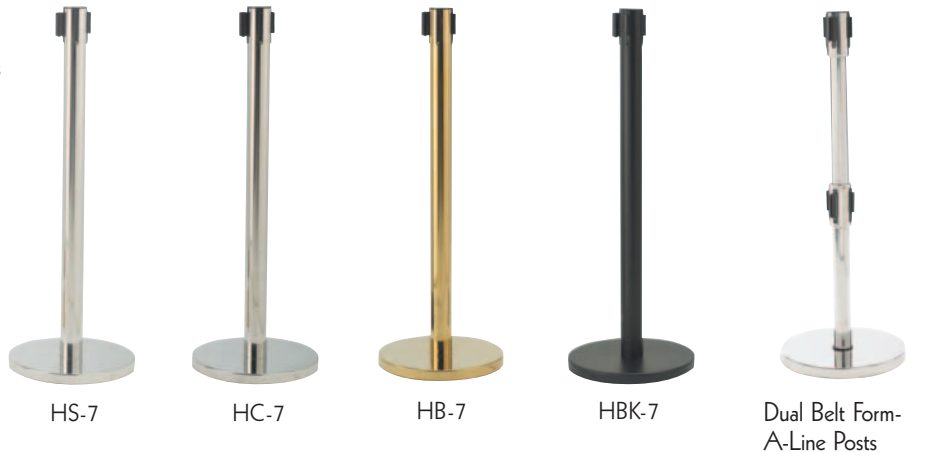
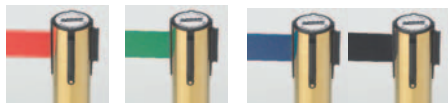
By Aarco

For Banks, Motor Vehicle Agencies, Cafeterias and all areas where organized queuing is required.

Choose from Form-A-Line System retractable belt type systems in brass, satin, chrome and black. Belt colors are red, green, blue and black or choose traditional rope type systems in brass, satin and chrome. Ropes are available in black and red.

## Quality Crowd Control Systems

- 30 lb base with protective rubber floor guards
- Overall height 40"
- Polished brass or chrome finish
- Satin chrome finish
- Black powder coated finish
- Ships UPS
- Easy to assemble



### Wall Mounted Form-A-Line

**Retractable Belt** \* Specify Belt Color

Model #	Style
WM-7BK	Black
WM-7B	Brass
WM-7C	Chrome



### Wall Mounted Belt Clip

Model#	Style
WMC-7	

## Form-A-Line System

**Retractable belt style**

Model #	Style
HC-7	Chrome
HB-7	Brass
HBK-7	Black
HS-7	Satin

## Dual Belt Form-A-Line System

**Dual belt retractable style**

Model #	Style
HC-27	Chrome
HB-27	Brass
HBK-27	Black
HS-27	Satin

## Traditional Rope Style Posts

Designed for a more traditional and elegant environment such as: Theaters, Museums, Classic Restaurants and Art Galleries.



Model #	Style
LC-7	Chrome
LB-7	Brass
LS-7	Satin

## Velour Rope

All ropes are carefully constructed of a fibrous core material covered in plush velours in red and black. Our spring loaded snap type connectors are easy to use and have carefully polished chrome, satin or brass to coordinate perfectly with our traditional posts. Ropes are available in: 5', 6' and 8' lengths.



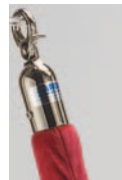
Satin and Black



Satin and Red



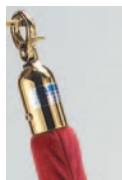
Chrome and Black



Chrome and Red



Brass and Black



Brass and Red

Choose Hardware Finish  
Chrome, Brass or Satin

Choose Rope Color  
Black or Red

Choose Rope Length  
5', 6' or 8'

## Form-A-Line Ropes

Model	Size	Rope Colors	Hardware Style
Tr-1	5'	Black	Chrome
Tr-2	5'	Black	Brass
Tr-25	5'	Black	Satin
Tr-3	5'	Red	Chrome
Tr-4	5'	Red	Brass
Tr-45	5'	Red	Satin
Tr-5	6'	Black	Chrome
Tr-6	6'	Black	Brass
Tr-65	6'	Black	Satin
Tr-7	6'	Red	Chrome
Tr-8	6'	Red	Brass
Tr-85	6'	Red	Satin
Tr-9	8'	Black	Chrome
Tr-10	8'	Black	Brass
Tr-105	8'	Black	Satin
Tr-11	8'	Red	Chrome
Tr-12	8'	Red	Brass
Tr-125	8'	Red	Satin





## Form-A-Line Sign Frame

Our removable Sign Frames are easy to use. The panels are easily changed by carefully sliding upward. Sign frames hold media up to 3/8" thick, providing double side capability. Available in two popular sizes and three attractive finishes that coordinate perfectly with our Form-A-Line posts.

Easily mounts to Form-A-Line "H" series (belt type) posts



Horizontal



Vertical

Custom signs available

Sign Size H & W	Horizontal Model#	Style	Sign Size H & W	Vertical Model#	Style
11 1/8" x 14 1/8"	HSF1114B	Brass	14 1/8" x 11 1/8"	VSF1411B	Brass
8 5/8" x 11 1/8"	HSF811B	Brass	11 1/8" x 8 5/8"	VSF118B	Brass
11 1/8" x 14 1/8"	HSF1114C	Chrome	14 1/8" x 11 1/8"	VSF1411C	Chrome
8 5/8" x 11 1/8"	HSF811C	Chrome	11 1/8" x 8 5/8"	VSF118C	Chrome
11 1/8" x 14 1/8"	HSF1114BK	Black	14 1/8" x 11 1/8"	VSF1411BK	Black
8 5/8" x 11 1/8"	HSF811BK	Black	11 1/8" x 8 5/8"	VSF118BK	Black
11 1/8" x 14 1/8"	HSF1114S	Satin	14 1/8" x 11 1/8"	VSF1411S	Satin
8 5/8" x 11 1/8"	HSF811S	Satin	11 1/8" x 8 5/8"	VSF118S	Satin

**New!**

Easily store or transport up to 18 Form-A-Line posts



## Form-A-Line Transport™

The Form-A-Line Transport is a convenient solution for easily transporting and efficiently storing up to 18 fully assembled Form-A-Line™ posts. Its sturdy construction consists of heavy 14 gauge steel with a durable powder coated finish. Foam rubber padded slots protect the posts when stored. Rubber wheel casters provide a smooth ride and lock to secure the unit in place.

### Features And Optional Equipment Package

- Weight 175lbs
- Overall size assembled 32"w x 41" deep x 72" h
- Includes 2 locking and 2 non-locking casters
- Unit is shipped KD for safe and economical shipping
- All manufactured components are welded
- Entire unit is powder coated for enduring quality

### Optional Features

- Pneumatic 8" casters with brakes
- Rubber bumpers to protect against property damage
- Storage tray for storing signs, tools and other components

Description	Model
Form-A-Line Transport	FAT18
Pneumatic 8" casters	C-88
Rubber Bumpers	RB-2
Storage Tray	ST-2

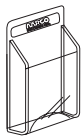


Optional Rubber Bumpers  
Set of four Model# RB-2

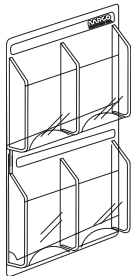
## Clear-Vu Magazine and Literature Displays

Top quality Clear-Vu displays blend with any interior décor, while organizing and displaying any printed materials. Available in a wide variety of configurations

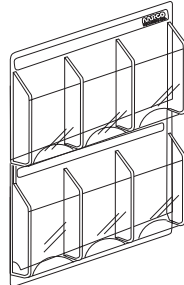
- Long lasting thermomolded design
- Clear non-yellowing PETG
- Access opening allows dust, paper fibers, paper clips and other debris can be cleaned quickly and easily.
- All units are packaged individually and are "freight ready" for damage free shipping.
- No assembly required
- Equipped with pre-drilled mounting holes
- Includes hardware for easy installation



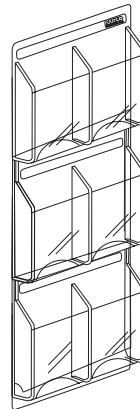
LRC100 -  
1 Mg



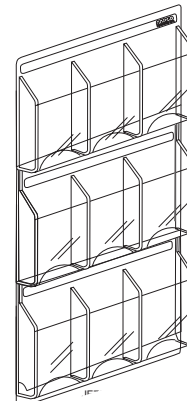
LRC104 - 4 Mg



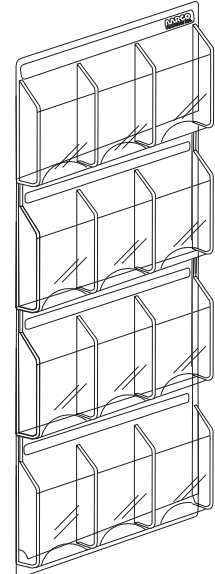
LRC103 - 6 Mg



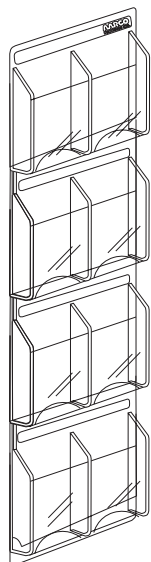
LRC120 -  
6 Mg



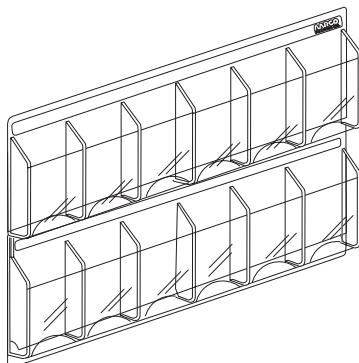
LRC101 - 9 Mg



LRC111 - 12 Mg



LRC115 - 8 Mg



LRC117 - 12 Mg

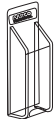
### Magazine Display Models

Model#	Pockets Mag	Dimensions H	W
LRC100	1	14.25"	11"
LRC101	9	37"	30"
LRC103	6	25"	30"
LRC104	4	25"	21"
LRC111	12	49"	30"
LRC115	8	49"	21"
LRC117	12	25"	60"
LRC120	6	36.75"	21"

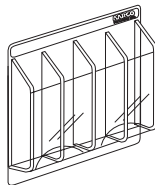


## Pamphlet Display Models

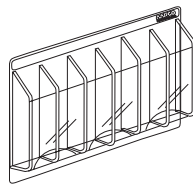
Model#	Pockets		Dimensions	
	Pam		H	W
LRC108	8		21"	21"
LRC109	24		41"	30"
LRC112	12		21"	30"
LRC113	6		11"	31"
LRC116	1		11"	65"
LRC121	4		11"	21"



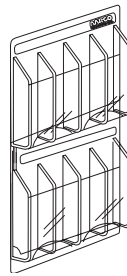
LRC116 - 1 Pam



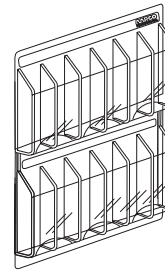
LRC121 - 4 Pam



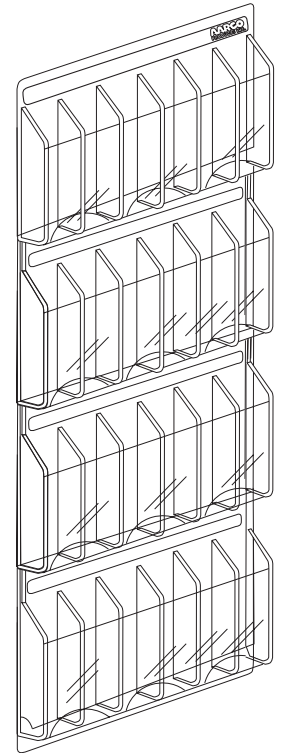
LRC113 - 6 Pam



LRC108 - 8 Pam



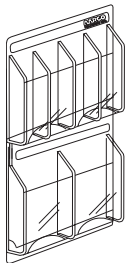
LRC112 - 12 Pam



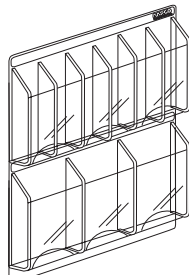
LRC109 - 24 Pam

## Combination Pamphlet and Magazine

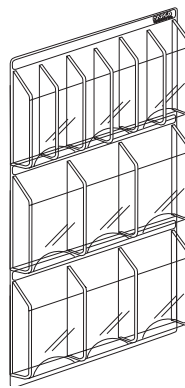
Model#	Pockets		Dimensions	
	Pam	Mag	H	W
LRC102	4	2	23"	21"
LRC106	6	3	23"	30"
LRC107	6	6	35"	30"
LRC110	12	6	45"	30"
LRC114	8	4	45"	21"



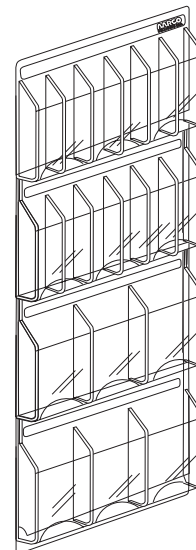
LRC102 - 4Pam,  
2 Mg



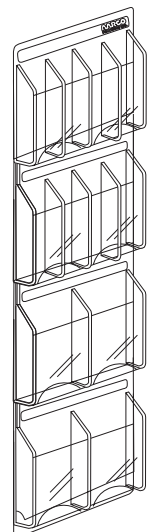
LRC106 - 6 Pam,  
3 Mg



LRC107 - 6Pam, 6 Mg



LRC110 - 12Pam, 6 Mg



LRC114 -  
8 Pam, 4 Mg





**AARCO**  
**PRODUCTS INC.**

21 Old Dock Road, Yaphank, NY 11980

**Fax: (631) 924-5843 Tel: (800) 246-6038**

E-Mail: [inquire@aacopproducts.com](mailto:inquire@aacopproducts.com)

[www.aarcopproducts.com](http://www.aarcopproducts.com)

Distributed By: