

Plastic Laminate



1540 ClassicSeries™ PLASTIC LAMINATE TOILET PARTITION SYSTEM



Moderate-use restrooms

Budget-sensitive projects

Industrial-grade particle board core

High-pressure plastic laminate edges
and surfaces

Class B ASTM E84 Interior Wall and
Ceiling Finish Classification

Scratch-, dent- and impact-resistant

Doors, panels, stiles 1" (25mm) thick

10-day Rapid⚡Response Program: 35 standard
colors and patterns (See page 18)

20-day Fast⚡Color™ Plastic Laminate Program:
400+ colors and patterns (See page 19)

1-year Limited Warranty

SOLID COLOR REINFORCED COMPOSITE COLOR GUIDE.

1090 SierraSeries®

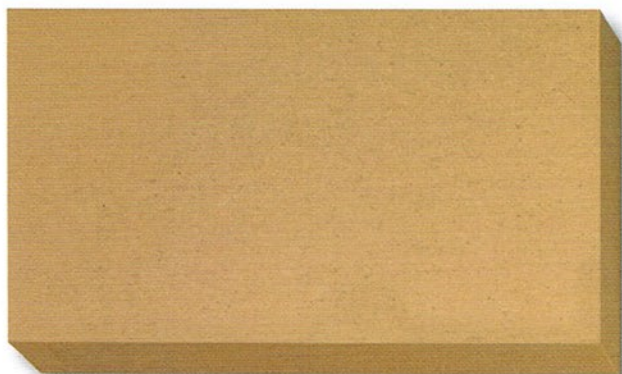


SC01 Golden Khaki

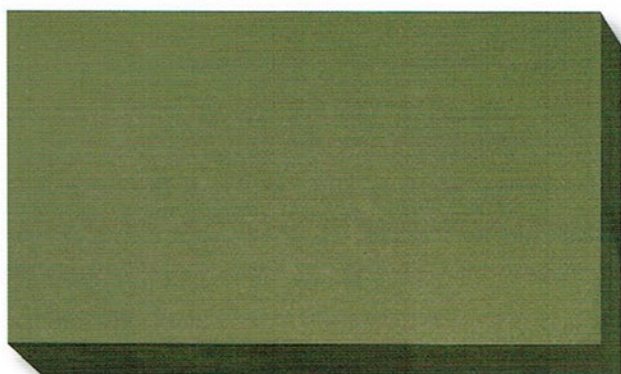


SC02 Desert Beige

TRESPA®



SC03 Terra Cotta



SC04 Forest Green

Rapid⚡Response 10-DAY TOILET PARTITION ORDER FULFILLMENT PROGRAM.

Series: 1090 SierraSeries.

Quantities and Lead Time: 25 compartments within 10 workdays after order approval at no extra charge.

Selection: 4 standard colors.

Bobrick/West: 818.982.9070
lacspartitions@bobrick.com

Bobrick/Mid-Continent: 731.424.7000
customerservicetn@bobrick.com

Bobrick/East: 518.877.7444
customerserviceny@bobrick.com

Mounting Configurations: Overhead-Braced, Floor-To-Ceiling, Ceiling-Hung.

Hardware: Satin-Finish Stainless Steel; Concealed and Full-Height.

Bobrick/Canada: 416.298.1611
customerserviceto@bobrick.com

Bobrick/International: 818.764.1000
international@bobrick.com

Note: Minor edge nicks and random color variations are a normal consequence of manufacturing material containing natural fibers. SierraSeries Solid Color Reinforced Composite (SCRC) colors are printed reproductions and are for descriptive purposes only. Request actual color samples for color confirmation. Arborite is a registered trademark of Arborite, Division of ITW Canada. Trespa is a registered trademark of Trespa International BV. Form No. CGSP-10/09 15M © 2009 Bobrick Washroom Equipment, Inc. Printed in U.S.A.



BUILDING VALUE SINCE 1906

BOBRICK.COM

SOLID PHENOLIC STANDARD COLOR GUIDE.

1080/1180 DuraLineSeries®



E0-00 White



S-463 Antique White



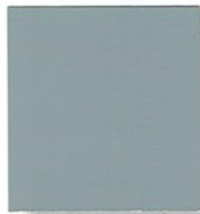
S-445 Almond



S-436 Sand



S-431 Willow Grey



S-542 Limousine Grey



S-513 Denim Blue



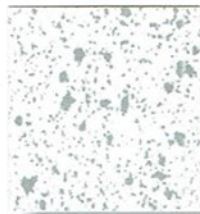
D25 Atlantis



4674 Evening Tigris



E0-09 Black



S0-00 Speckled White



P-705 White Speckle



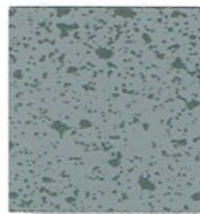
P-886 Grey Grit



P-887 Beige Grit



W78-01 Cherry



S0-04 Mid Grey



P-500 Black Star



C0-09 Black Craquele

ARBORITE®

TRESPA®

Note: All colors are matte finish.

Rapid Response 10-DAY TOILET PARTITION ORDER FULFILLMENT PROGRAM.

Series: 1080 DuraLineSeries (excludes 1180, Gap-Free and Maximum-Height Privacy Options).

Quantities and Lead Time: 25 compartments within 10 workdays after order approval at no extra charge.

Selection: 18 standard colors and patterns.

Mounting Configurations: Floor-Anchored, Overhead-Braced, Floor-To-Ceiling, Ceiling-Hung.

Hardware: Satin-Finish Stainless Steel; Concealed and Full-Height.

Note: Wood grain partitions have vertical grain direction only. Wood grain panels wider than 72" (1830mm) are in two pieces with a field-installed aluminum "H" channel covering the seam, furnished at an additional charge. Colors on this Guide are swatch representations of Solid Phenolic material. Refer to manufacturer's color chip samples for absolute color fidelity. Color chips are available from Bobrick on request. Additional colors are available and may be subject to extra charges and longer lead times.



BUILDING VALUE SINCE 1906