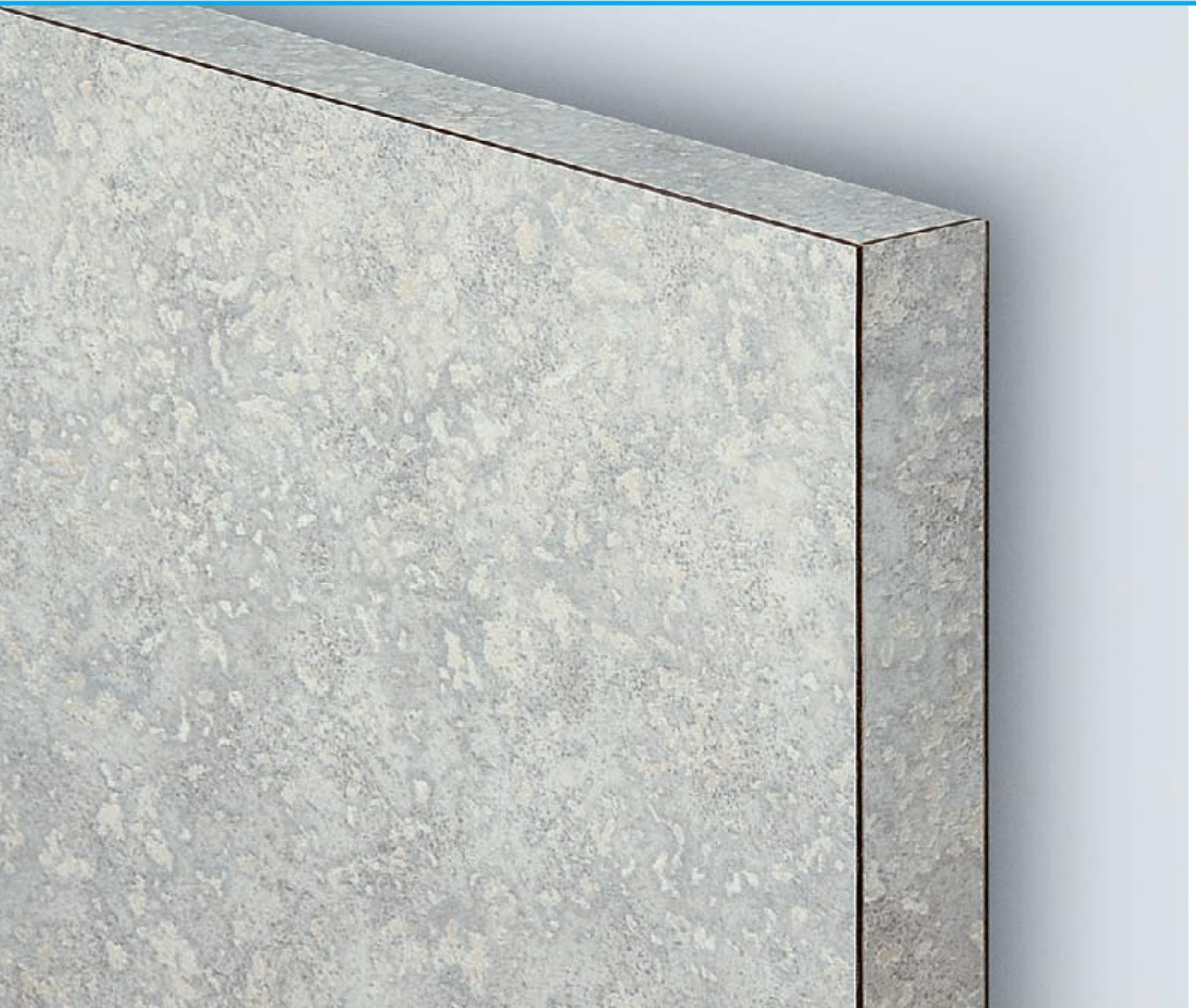


Plastic Laminate



1540 ClassicSeries™ PLASTIC LAMINATE TOILET PARTITION SYSTEM



Moderate-use restrooms

Budget-sensitive projects

Industrial-grade particle board core

High-pressure plastic laminate edges
and surfaces

Class B ASTM E84 Interior Wall and
Ceiling Finish Classification

Scratch-, dent- and impact-resistant

Doors, panels, stiles 1" (25mm) thick

10-day Rapid⚡Response Program: 35 standard
colors and patterns (See page 18)

20-day Fast⚡Color™ Plastic Laminate Program:
400+ colors and patterns (See page 19)

1-year Limited Warranty

SOLID PHENOLIC STANDARD COLOR GUIDE.

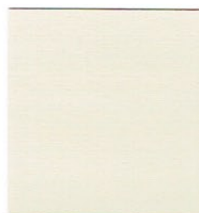
1080/1180 DuraLineSeries®



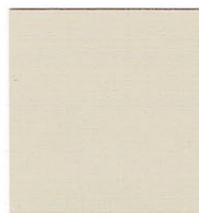
E0-00 White



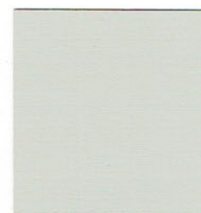
S-463 Antique White



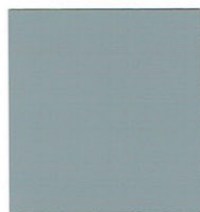
S-445 Almond



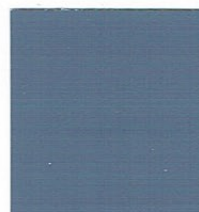
S-436 Sand



S-431 Willow Grey



S-542 Limousine Grey



S-513 Denim Blue



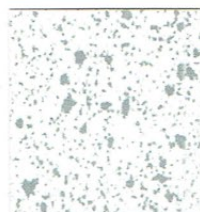
D25 Atlantis



4674 Evening Tigris



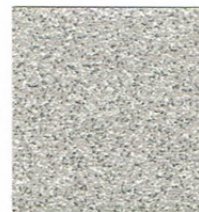
E0-09 Black



S0-00 Speckled White



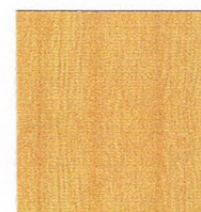
P-705 White Speckle



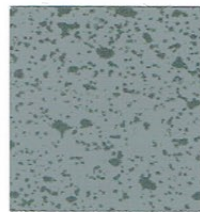
P-886 Grey Grit



P-887 Beige Grit



W78-01 Cherry



S0-04 Mid Grey



P-500 Black Star



C0-09 Black Craquele

ARBORITE® TRESPA®

Note: All colors are matte finish.

Rapid⚡Response 10-DAY TOILET PARTITION ORDER FULFILLMENT PROGRAM.

Series: 1080 DuraLineSeries (excludes 1180, Gap-Free and Maximum-Height Privacy Options).

Quantities and Lead Time: 25 compartments within 10 workdays after order approval at no extra charge.

Selection: 18 standard colors and patterns.

Mounting Configurations: Floor-Anchored, Overhead-Braced, Floor-To-Ceiling, Ceiling-Hung.

Hardware: Satin-Finish Stainless Steel; Concealed and Full-Height.

Note: Wood grain partitions have vertical grain direction only. Wood grain panels wider than 72" (1830mm) are in two pieces with a field-installed aluminum "H" channel covering the seam, furnished at an additional charge. Colors on this Guide are swatch representations of Solid Phenolic material. Refer to manufacturer's color chip samples for absolute color fidelity. Color chips are available from Bobrick on request. Additional colors are available and may be subject to extra charges and longer lead times.



BUILDING VALUE SINCE 1906