



Evergreen face sheets are bonded under heat and high pressure to phenolic resin-impregnated kraft paper sheets. All compartments are solid color throughout, chamfered and free of milling marks. Popular in high traffic public buildings, schools, and institutional facilities. Evergreen is virtually indestructible with a graffiti resistant finish and very suitable for wet or highly damp areas.

Construction Features:

- 3/4" (19mm) stiles and doors
- 1/2" (12mm) thick panels and urinal screens
- Class B Fire Rating ASTM E84

Optional Features:

- Euroline hardware
- Optional 3/4" (19mm) thick panels/screens
- Class A Fire Rating ASTM E84

Special Features:

- Non-ghosting graffiti removal
- Water resistant
- Solid color throughout
- Stainless steel hardware
- Furnished hardware complies with ANSI A117 and Title 1-"T" of the Americans with Disabilities Act (ADA)
- Seven (7) earth tone colors
- Ten (10) year limited warranty

Color Selections



*Nutmeg



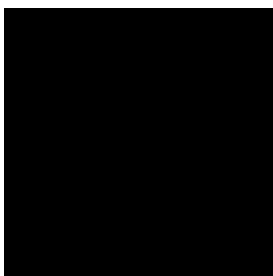
*Cinnamon



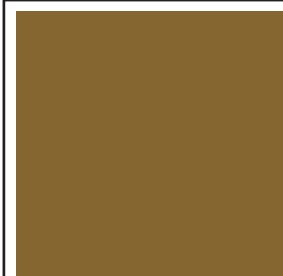
All Spice



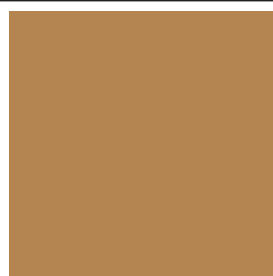
*Slate



*Ebony



*¹Ginger



*¹Pumpkin Spice

This color selector contains computer printed representations, therefore, color swatches may vary from actual color samples. To confirm selection, request and review our product samples.

* These colors may qualify for Express Ship, contact factory for information.

¹ Only available in Florida.

Evergreen is only manufactured in Florida and Washington.

FLORIDA

11400 NW 36th Avenue, Miami, Florida 33167
P. 305/821-5700 F. 866/216-5300 email: florida@ampco.com

TENNESSEE (Sales and Administrative office only)

1200 Violet Street, Morristown, Tennessee 37814
P. 423/586-3993 F. 866/902-5370 email: tennessee@ampco.com

TEXAS

201 Railroad Avenue, Sanger, Texas 76266
P. 940/458-7401 F. 866/372-5300 email: texas@ampco.com

WASHINGTON

4520 B Street NW, Suite B, Auburn, Washington 98001
P. 253/852-5900 F. 866/323-5300 email: washington@ampco.com