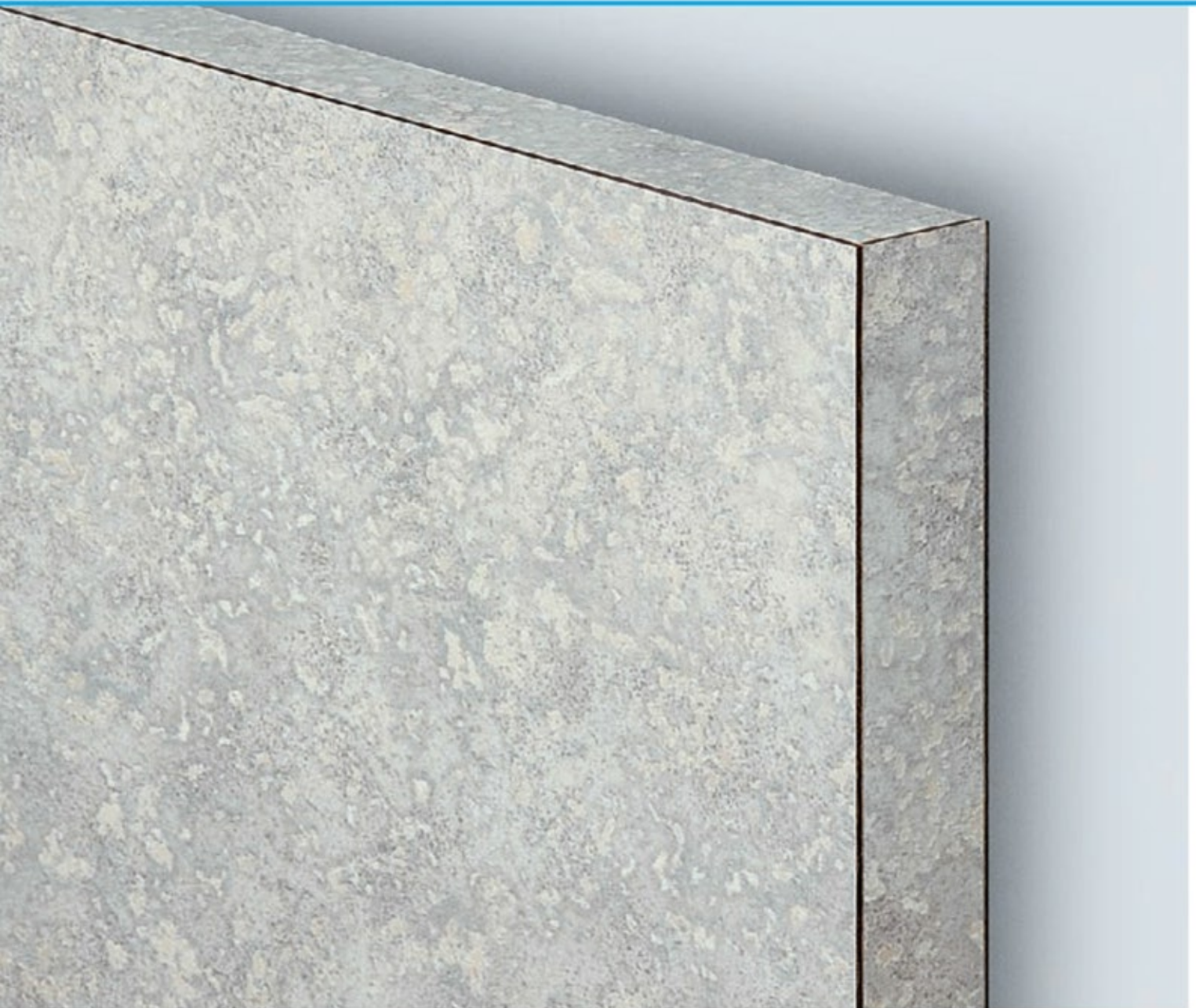


Plastic Laminate



1540 ClassicSeries™ PLASTIC LAMINATE TOILET PARTITION SYSTEM



Moderate-use restrooms

Budget-sensitive projects

Industrial-grade particle board core

High-pressure plastic laminate edges
and surfaces

Class B ASTM E84 Interior Wall and
Ceiling Finish Classification

Scratch-, dent- and impact-resistant

Doors, panels, stiles 1" (25mm) thick

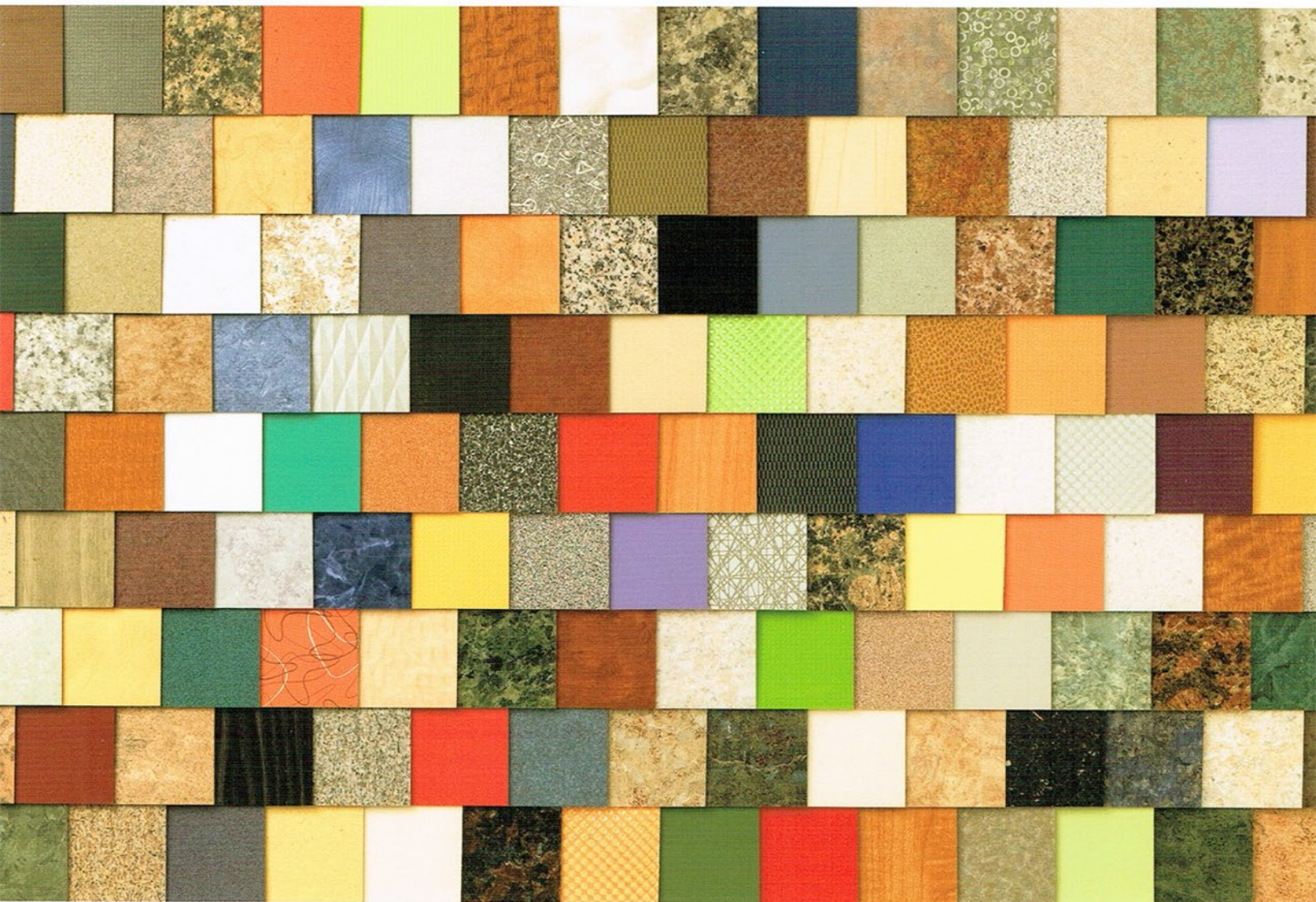
10-day Rapid⚡Response Program: 35 standard
colors and patterns (See page 18)

20-day Fast⚡Color™ Plastic Laminate Program:
400+ colors and patterns (See page 19)

1-year Limited Warranty

20-DAY PLASTIC LAMINATE EXPANDED COLOR GUIDE.

1540 ClassicSeries®, 1040 DesignerSeries™, 1030 TrimLineSeries™



20-Day FastColor™ Program.

- 1540 Classic, 1040 Designer, 1030 TrimLine Series
- Up to 15 compartments shipped within 20 workdays after order approval at no extra charge
- Choose from 400+ stocked standard colors and patterns
- Floor-Anchored, Overhead-Braced, Ceiling Hung mounting configurations
- Choice of options: Stainless Steel Hardware, Full-Height Hardware, Steel Core Stile with Welded Leveling Device
- 1030 Series not available on 20-Day Program in Canada

Note: Wood grain partitions have vertical grain direction only. Wood grain panels wider than 60" (1525mm) will be spliced, joining the two pieces onto the particle board core for an additional charge. Colors on this Guide are swatch representations of plastic laminate material. Refer to manufacturer's color chip samples for absolute color fidelity. Color chips are available from Bobrick on request. Additional colors are available and may be subject to longer lead times and additional charges.

iBob Distributor Order Entry System.

Please sign up with iBob for placing all your Bobrick orders, especially for toilet partitions.

1. Send your email address to: ibobadministration@bobrick.com
2. You will be assigned a user name, password and link.
3. Schedule a Webex training session.
4. iBob customer service:
Los Angeles, 818.982.9070
New York, 518.877.7444

Wilsonart, Formica and Nevamar are registered trademarks of Wilsonart International, Formica Corporation, and Panolam Industries, respectively. Form No. CGPL-4/11 15M
© 2011 Bobrick Washroom Equipment, Inc. Printed in U.S.A.

Bobrick Worldwide Service:

United States/West: 818.982.9070
lacspartitions@bobrick.com
United States/East: 518.877.7444
customerservicenyc@bobrick.com
Canada/Ontario East: 877.423.6555
customerserviceeca@bobrick.com
Canada/Manitoba West: 877.423.6444
customerservicewca@bobrick.com
International: 818.764.1000
international@bobrick.com



BUILDING VALUE SINCE 1906

BOBRICK.COM

PLASTIC LAMINATE STANDARD COLOR GUIDE.

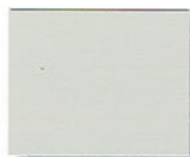
1540 ClassicSeries®, 1040 DesignerSeries™, 1030 TrimLineSeries™



D354 Designer White



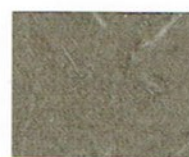
1573 Frosty White



1500 Grey



D315 Platinum



4674 Evening Tigris



D91 Slate Grey



1572 Antique White



D30 Natural Almond



1530 Beige



D97 Haze



D50 Khaki Brown



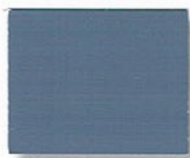
4841 Desert Zephyr



D96 Shadow



D14 Port



D321 Brittany Blue



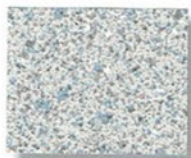
D25 Atlantis



1595 Black



4621 White Nebula



4142 Grey Glace



4622 Grey Nebula



4623 Graphite Nebula



4794 Windswept Bronze



4608 Caldera Beige



4143 Neutral Glace



4814 Tungsten EV



4669 Natural Tigris



4738 Ochre Roletta



1787 Oxide



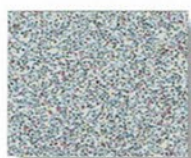
7054 Wild Cherry



7040A Figured Mahogany



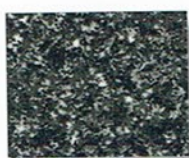
4624 Beige Nebula



4630 Cloud Nebula



4759 Mystique Marine



4552 Ebony Star



Note: All colors are matte finish (-60 suffix not shown).

2-Day 1540 Series Program.

- Up to 25 compartments shipped 2 days after receipt of order at no extra charge
- Choose from 34 standard colors
- Floor-Anchored, Overhead-Braced, Ceiling-Hung mounting configurations
- Choice of options: Stainless Steel Hardware, Steel Core Stile with Welded Leveling Device
- 2-day 1540 Series orders are only available using the iBob Order Entry System. iBob Order Times: 10AM Pacific, 12 Noon Central, 1PM Eastern

10-Day RapidResponse® Program.

- 1540 Classic, 1040 Designer, 1030 TrimLine Series
- Up to 25 compartments shipped within 10 workdays after order approval at no extra charge
- Choose from 34 standard colors
- Floor-Anchored, Overhead-Braced, Ceiling-Hung mounting configurations
- Choice of options: Stainless Steel Hardware, Full-Height Hardware, Steel Core Stile with Welded Leveling Device
- 1030 Series not available on 10-Day Program in Canada

iBob Distributor Order Entry System.

Use iBob for your 2-Day 1540 Series plastic laminate toilet partition orders, along with all your Bobrick orders.

1. Send your email address to: ibobadministration@bobrick.com
2. You will be assigned a user name, password and link.
3. Schedule a Webex training session.
4. iBob: Los Angeles, 818.982.9070
New York, 518.877.7444



BUILDING VALUE SINCE 1906

SOLID COLOR REINFORCED COMPOSITE COLOR GUIDE.

1090 SierraSeries®

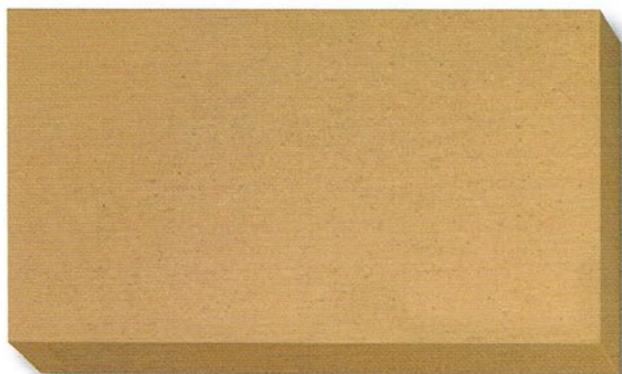


SC01 Golden Khaki



SC02 Desert Beige

TRESPA®



SC03 Terra Cotta



SC04 Forest Green

Rapid⚡Response 10-DAY TOILET PARTITION ORDER FULFILLMENT PROGRAM.

Series: 1090 SierraSeries.

Quantities and Lead Time: 25 compartments within 10 workdays after order approval at no extra charge.

Selection: 4 standard colors.

Bobrick/West: 818.982.9070
lacspartitions@bobrick.com

Bobrick/Mid-Continent: 731.424.7000
customerservicetn@bobrick.com

Bobrick/East: 518.877.7444
customerserviceny@bobrick.com

Mounting Configurations: Overhead-Braced, Floor-To-Ceiling, Ceiling-Hung.

Hardware: Satin-Finish Stainless Steel; Concealed and Full-Height.

Bobrick/Canada: 416.298.1611
customerserviceto@bobrick.com

Bobrick/International: 818.764.1000
international@bobrick.com

Note: Minor edge nicks and random color variations are a normal consequence of manufacturing material containing natural fibers. SierraSeries Solid Color Reinforced Composite (SCRC) colors are printed reproductions and are for descriptive purposes only. Request actual color samples for color confirmation. Arborite is a registered trademark of Arborite, Division of ITW Canada. Trespa is a registered trademark of Trespa International BV. Form No. CGSP-10/09 15M © 2009 Bobrick Washroom Equipment, Inc. Printed in U.S.A.



BUILDING VALUE SINCE 1906

BOBRICK.COM

SOLID PHENOLIC STANDARD COLOR GUIDE.

1080/1180 DuraLineSeries®



E0-00 White



S-463 Antique White



S-445 Almond



S-436 Sand



S-431 Willow Grey



S-542 Limousine Grey



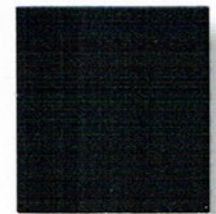
S-513 Denim Blue



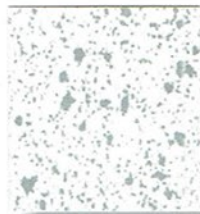
D25 Atlantis



4674 Evening Tigris



E0-09 Black



S0-00 Speckled White



P-705 White Speckle



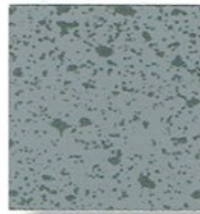
P-886 Grey Grit



P-887 Beige Grit



W78-01 Cherry



S0-04 Mid Grey



P-500 Black Star



C0-09 Black Craquele

ARBORITE®

TRESPA®

Note: All colors are matte finish.

Rapid Response 10-DAY TOILET PARTITION ORDER FULFILLMENT PROGRAM.

Series: 1080 DuraLineSeries (excludes 1180, Gap-Free and Maximum-Height Privacy Options).

Quantities and Lead Time: 25 compartments within 10 workdays after order approval at no extra charge.

Selection: 18 standard colors and patterns.

Mounting Configurations: Floor-Anchored, Overhead-Braced, Floor-To-Ceiling, Ceiling-Hung.

Hardware: Satin-Finish Stainless Steel; Concealed and Full-Height.

Note: Wood grain partitions have vertical grain direction only. Wood grain panels wider than 72" (1830mm) are in two pieces with a field-installed aluminum "H" channel covering the seam, furnished at an additional charge. Colors on this Guide are swatch representations of Solid Phenolic material. Refer to manufacturer's color chip samples for absolute color fidelity. Color chips are available from Bobrick on request. Additional colors are available and may be subject to extra charges and longer lead times.



BUILDING VALUE SINCE 1906