

Color Selector

Solid Plastic Polyethylene (HDPE)



FLORIDA

11400 NW 36th Avenue, Miami, Florida 33167
P. 305.821.5700 F. 866.216.5300 E: florida@ampco.com

TENNESSEE (Sales & Administrative office only)

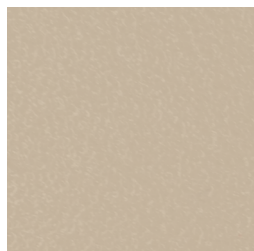
1200 Violet Street, Morristown, Tennessee 37814
P. 423.586.3993 F. 866.902.5370 E: tennessee@ampco.com

TEXAS

201 Railroad Avenue, Sanger, Texas 76266
P. 940.458.7401 F. 866.372.5300 E: texas@ampco.com

WASHINGTON

4520 B Street NW, Suite B, Auburn, Washington 98001
P. 253.852.5900 F. 866.323.5300 E: washington@ampco.com



Cashmere 947-113



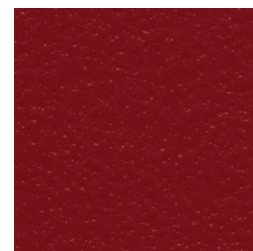
Khaki 947-122



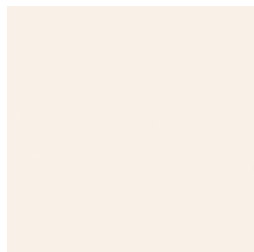
Marine Blue 947-125



Hunter Green 947-119



Burgundy Wine 947-110



Champagne 947-114



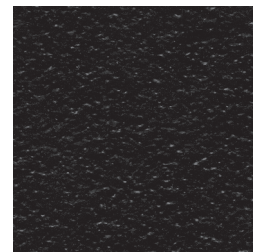
White 947-108



Ash Grey 947-101



Shadow Grey 947-134



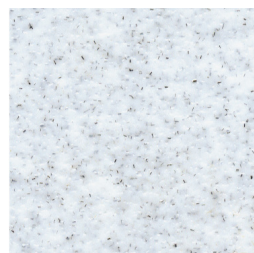
Black 947-103



Crystal Granite* 947-116



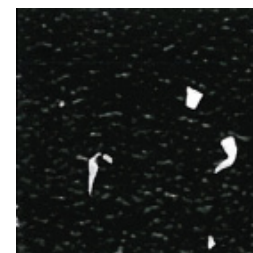
Sable* 947-133



Charcoal* 947-115



Grey Granite* 947-118



Black Confetti* 947-106

Color batches may vary.

Colors may vary from swatches shown. Please contact factory for actual samples of color and finish.

Additional colors are available with an up-charge. Contact the factory for pricing and availability.

Matching shoes and brackets available in solid colors only. Standard textured finish; solid plastic material shall have a nominal 1" thick polymer resin construction.

*The decorative speckles found in the Crystal Granite 947-116, Sable 947-133, Charcoal 947-115, Grey Granite 947-118 and Black Confetti 947-106 are processed on the surface of each side of the material, and are not color-thru.

AMPCO manufactures High Pressure Laminate, Phenolic Core, Phenolic Core with PVC edging, Color thru Phenolic (Evergreen), Powder-Coated Steel (Baked Enamel), Stainless Steel, Solid Plastic, and Solid Surface Toilet Partitions in addition to Architectural Flush Wood Doors.